

**Skylight**  
music theatre



# Frankenstein

FEB. 21 - MAR. 9, 2025

**THE MUSICAL**

*Based on the novel by Mary Shelley*

Music  
**Mark Baron**

Book and Lyrics  
**Jeffrey Jackson**

*Original Story Adaptation by Gary P. Cohen*

2024-2025 SEASON  
[www.SMTMKE.org](http://www.SMTMKE.org)

SKYLIGHT'S 65TH SEASON  
Milwaukee's Home for Music Theatre

You want what's  
best for your

*parents*

LET US SHARE  
OUR EXPERIENCE  
WITH YOU.



**+** *St. Camillus*  
A Life Plan Community

Call us today. 414.259.6310

**DON'T MISS OUT ON THIS DIVINE COMEDY!**

# SISTER ACT

**APRIL 4 - 27**

Music by **Alan Menken**  
Lyrics by **Glenn Slater**  
Book by **Cheri Steinkellner & Bill Steinkellner**  
Additional Book Material by **Douglas Carter Bean**  
Based on the Touchstone Pictures  
Motion Picture *Sister Act*  
written by **Joseph Howard**  
Directed by **Molly Rhode**  
Choreographed by **Alexis J. Roston**  
Music Direction by **Alissa Rhode**

Hallelujah! Join us as we close our 65th season with this hilarious, heartwarming, and joyous musical from award-winning composer Alan Menken (*The Little Mermaid, Beauty and the Beast, Little Shop of Horrors*). Get your tickets now for an experience of laughter, music, and pure entertainment!

Recommended for ages 8 and up.

**IT WOULD BE SINFUL  
TO NOT GRAB TICKETS  
WWW.SMTMKE.ORG**

Don't miss Skylight's other great experiences, including our  
**2025-26 Season Announcement Event!**

Visit [www.SMTMKE.org](http://www.SMTMKE.org)  
to stay up-to-date on all the latest news!



**Thank You to Our  
Veteran's Night Season Sponsor!**



**GARY SINISE**  
\* FOUNDATION \*

**We are grateful to  
Gary and his Foundation for  
giving our local veterans a  
night out at the theatre.**

**Michael Unger**  
Artistic Director

**Susan Varela**  
Executive Director

**Skylight**  
music theatre

Presents:

# Frankenstein

THE MUSICAL

Music  
**Mark Baron**

Book and Lyrics  
**Jeffrey Jackson**

*Based on the novel by Mary Shelley*

Original Story Adaptation by Gary P. Cohen

February 21 – March 9, 2025 | Cabot Theatre | Broadway Theatre Center

Directed by Artistic Director

**Michael Unger\*\***

Movement Director  
**Jayne Regan Pink**

Music Direction  
**Janna Ernst**

Scenic Designer  
**Jonathan Berg-Einhorn**

Lighting/Projection Designer  
**Smooch Medina**

Costume Designer  
**Misti Bradford**

Sound Designer  
**Steve Tonar**

Production Stage Manager  
**Kathleen Dickinson\***

Resident Assistant Stage Manager  
**Jordan Ilyssa Angelo**

*Frankenstein: The Musical* was originally produced Off-Broadway by Gerald Goehring, Douglas C. Evans, Michael F. Mitri, and David S. Stone in association with Barbara and Emery Olcott.

*Frankenstein: The Musical* is presented by special arrangement with Broadway Licensing Global. ([www.broadwaylicensing.com](http://www.broadwaylicensing.com))

NOTE TO AUDIENCE: The videotaping or audio and/or visual recording of this production is a violation of United States Copyright Law and an actionable federal offense.

**Costume Sponsor**  
**Carole and Phil Walther**

**SEASON SPONSORED BY**



**JAN SERR &  
JOHN SHANNON**

**CAMPAC**  
Milwaukee County Arts Fund



This project is sponsored in part by a grant from the Wisconsin Arts Board with Endowment from the State of Wisconsin and the National Endowment for the Arts.



\*Appearing through an agreement between Skylight Music Theatre and Actors' Equity Association, the Union of Professional Actors and Stage Managers in the United States.



\*\* The Director is a member of the STAGE DIRECTORS AND CHOREOGRAPHERS SOCIETY, a national theatrical labor union.

Frankenstein: The Musical **5**

# A NOTE FROM THE ARTISTIC DIRECTOR



It is hard to believe that we are four-fifths of the way through our 65th season. My, how time (and art) flies. This new version of *Frankenstein* has an epic power and timeliness that harkens to the past but may have even more to say about our immediate future. The promise and perils of technology are in the news, on our TV screens, in our earbuds, and on our phones every day. The rise of Artificial Intelligence thrills and threatens in equal measure. Although a bit sheepish to admit it, I'll not deny that we have utilized A.I. in our projection design – but we are very careful with it. Our projections will not become sentient or dangerous. I cannot say the same about our Creature and Victor.

Many people assign the moniker “Frankenstein” to a monster or creature. But that is a misnomer. Victor Frankenstein is the young scientist with great ambition who is the creator of the Creature. An equally important inaccuracy that has embedded itself in our collective view of Frankenstein when compared with the novel is the depiction of the Creature as a hulking green guy with a flat-top haircut and bolts sticking out of his neck. This musical hews far closer to author Mary Shelley's original intent: with the creature described as both horrid and beautiful, yearning desperately for connection, community, and love.



Theodore von Holst,  
*Frankenstein* (1831)



Richard Rothwell,  
*Mary Shelley* (1831-40)

Mary Shelley was the daughter of two dynamos at the turn of the 19th century. Her mother, an iconoclast who was an early believer in equal education for both boys and girls, died eleven days after Mary was born. Her father was a renowned author and one of the first “modern” proponents of utilitarianism and anarchism. She inherited from both her parents guts, independence, and literary brilliance. She was eighteen years old in 1816 when she started writing *Frankenstein*. She and her soon-to-be-husband Percy Bysshe Shelley were visiting their friend Lord Byron at his lake house on the shores of Lake Geneva (not Wisconsin's, Europe's). Because of the eruption of a volcano in Indonesia the year prior, the stormy weather during that summer was perfect for staying inside and reading ghost stories. Which is exactly what Lord Byron and his compatriots did. Byron then suggested a contest to see who could write the best ghost story themselves. Also competing was John

William Polidori – whose submission to the contest was the first modern Dracula story, *The Vampyre*. All other contributions have fallen through the cracks of time, but Mary Shelley's struck the world like lightning. It was *Frankenstein; or, The Modern Prometheus*.

I am grateful to authors Jeffrey Jackson and Mark Baron for trusting us with creating this new version of their musical. They have been in Milwaukee, helping us shape the piece, and giving their stamp of approval to our collaboration. Wherever this show goes from here, it will have been influenced by our local Skylight artists on both sides of the proscenium.

This Pandora's Box of a story is a warning to all of us that we must beware of allowing individuals and/or societies to unleash uncontrollable ideas. Regardless of whether it is one Frankenstein or a cadre of them, we all suffer the consequences of misguided ambition. We must embed empathy and care into the soul of everything we touch, influence, create. Otherwise, we will become the uncontrollable beast that consumes everything in its path, including itself.

  
-Michael Unger, Artistic Director,  
Director of *Frankenstein: The Musical*

# A NOTE FROM THE EXECUTIVE DIRECTOR



Photo: Kenny Yoo

Welcome to Skylight Music Theatre's Midwest premiere of *Frankenstein: The Musical*. We are delighted to have you with us for this remarkable story that has captivated audiences for generations. Thank you for choosing to spend your time with us, and for supporting the arts in our vibrant community.

As a lifelong fan of the horror-romance genre, I have always found myself drawn to tales that explore the darker recesses of the human experience. From my childhood obsession with *Dracula* to the bold film adaptation of *Frankenstein* by Kenneth Branagh, (and the eye-candy version, that featured rock star Sting!) and my fondness for the *Twilight* saga in the early 2000s, these stories have shaped my appreciation for theatrical narratives that blend the eerie with the profound. With *Frankenstein*, we have the opportunity to experience this genre, brought to life through a stunning, sweeping score and an incredible storyline that examines the complex relationship between a father and son. I am thrilled to share this powerful work with our Skylight audience, and I hope it resonates with you as deeply as it does with me.



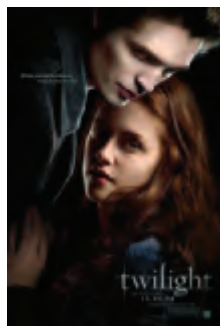
Universal Pictures, *Dracula* (1931)



TriStar Pictures, *Mary Shelley's Frankenstein* (1994)



Columbia Pictures, *The Bride* (1985)



Lionsgate, *Twilight* (2008)

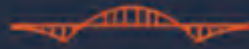
As we continue to bring bold new works like *Frankenstein* to the stage, we need your support more than ever. Your involvement is vital to ensuring that we can cultivate and showcase innovative productions that challenge and inspire. If you feel moved to become more involved, please seek me out during your visit to learn more about how you can become engaged with Skylight.

We would love to have you close to us—close enough to perhaps bite on the neck?!

Thank you once again for being here for this performance and enjoy the show!

-Susan Varela, Executive Director

# BRING YOUR HOME SEARCH TO LIFE!



## CHAD LARGET

Connecting People with Places

☎ (414) 510-9888

✉ [clarget@firstweber.com](mailto:clarget@firstweber.com)

🌐 [chadlarget.firstweber.com](http://chadlarget.firstweber.com)



## FIRST WEBER

*The human side of real estate.*

**PAEC**  
OAK CREEK  
PERFORMING ARTS & EDUCATION CENTER

For more information and  
more shows, visit  
[OakCreekPAEC.com](http://OakCreekPAEC.com)



### Artrageous

A high energy show with music, live painting  
and blacklight!

March 16th, 2pm



### Ty Barnett

Hilarious Chicago comedian, seen on  
America's Got Talent!

May 2nd, 7pm







# Frankenstein

THE MUSICAL

Victor .....	Seth K. Hale*
Elizabeth .....	Stephanie Staszak
Condemned Man/The Creature .....	Miss Kyle Blair
Captain Walton .....	Joe Picchetti
Henry .....	Jonathan Riker
Victor's Father/Blind Man .....	Rick Richter
Victor's Mother/Agatha .....	SaraLynn Evenson
Justine .....	Ashley M. Rodriguez
Young Victor/William .....	Mars Schultz
Ensemble .....	Josh Pope

**Dance Captain**  
Stephanie Staszak

**Fight Captain**  
Ashley M. Rodriguez

\*Appearing through an agreement between Skylight Music Theatre and Actors' Equity Association, the Union of Professional Actors and Stage Managers in the United States.

## UNDERSTUDIES

Understudies/Standbys never substitute for listed players unless a specific notification is made at the time of the performance.

**For Victor and Victor's Father – Joe Picchetti**

**For Henry and Walton – Josh Pope**

## ORCHESTRA

Music Director/Keyboard 1 .....	Janna Ernst
Key 2 .....	Jayne Latva
Bass .....	Michael Ritter
Woodwinds .....	Jon Lovas
Drums and Percussion .....	Michael "Ding" Lorenz

*Frankenstein: The Musical* has a runtime of 2 hours, including a 20 minute intermission.

# MUSICAL NUMBERS

## ACT 1

<b>PRELUDE</b> .....	Capt. Walton, Victor, Ensemble
<b>A GOLDEN AGE</b> .....	Victor, Elizabeth, Ensemble
<b>FIND YOUR WAY HOME</b> .....	Elizabeth, Victor
<b>AMEN</b> .....	Condemned Man, Victor, Ensemble
<b>BIRTH TO MY CREATION</b> .....	Victor
<b>THE LAB</b> .....	Victor
<b>THE CHASE</b> .....	Elizabeth, Henry, William, Justine
<b>UNSPOKEN</b> .....	Elizabeth
<b>THE CREATURE'S TALE</b> .....	The Creature
<b>THE WAKING NIGHTMARE</b> .....	The Creature, Ensemble
<b>THE MUSIC OF LOVE</b> .....	Agatha, Blind Man, The Creature
<b>WHY?</b> .....	William, Justine, The Creature, Victor, Ensemble
<b>THE PROPOSITION</b> .....	Victor, The Creature, Ensemble

## ACT 2

<b>A HAPPIER DAY</b> .....	Father, Henry, Elizabeth, Ensemble
<b>THE MODERN PROMETHEUS</b> .....	Victor, Henry, The Creature
<b>ABOMINATION</b> .....	Henry
<b>AN ANGEL'S EMBRACE</b> .....	The Creature
<b>ENOUGH TO LET GO</b> .....	Victor, Elizabeth
<b>THESE HANDS</b> .....	The Creature
<b>FATHERS' SONG</b> .....	Father
<b>THE CHASE (REPRISE)</b> .....	Victor, Ensemble
<b>THE COMING OF THE DAWN</b> .....	Victor
<b>THE ARCTIC</b> .....	The Creature
<b>AMEN (REPRISE)</b> .....	The Creature, Victor

# PRODUCTION SUPPORT

Arrangements, Orchestrations, Keyboard Programming .....	Mark Baron
Director of Production and Facilities .....	Terry Harper
Head Carpenter/Fleet Manager .....	Islay Reed
Scenic Carpenters .....	Austin Hobbs, Jonathan Berg-Einhorn, Islay Reed
Scenic Painter .....	Lydia Moss
Properties Supervisor .....	Amaya Rockett
Props Artisan .....	Ava Rodriguez
Resident Assistant Stage Manager .....	Jordan Ilyssa Angelo
Projection Content Designer .....	Jeffrey Jackson
Lighting Supervisor .....	Dovie Roberts
Electricians .....	Zoe Lucas, Jonnie Painter, Kenan Pulver, Isabelle Flores, Eden Skoug
Follow Spot Operators .....	Zoe Lucas, Dovie Roberts
Audio/Video Supervisor .....	Jack Albert
Costume Director .....	Jeanne Schrank
Costume Design Assistant .....	Shannon Burke
Wardrobe Supervisor .....	Courteney Shipley
Stitchers .....	Shima Orans, Jude Martina, Brooke Wallo
Fight and Intimacy Director .....	Jamie Cheatham
Script Supervisor/Deck Crew .....	Nathaniel Unger
Graphic Design Support .....	Rylee Zuniga
Photographer .....	Mark Frohna
Videographers .....	Traveling Lemur Productions

Special Thanks to Jeffrey Jackson, Mark Baron, UW-Milwaukee Theatre Department, UW-Parkside Theatre Department, Marquette University Theatre Department, Florentine Opera

# *Not a Bad Seat in the House*



*See More Projects*



**David J. Frank**  
Landscape Contracting

**Request a quote today at [davidjfrank.com](http://davidjfrank.com)**

*Southeastern Wisconsin's premier landscaping company*



Skylight  
music theatre

*A Staged Concert Event*



# TO CATCH A THIEF

*The Musical*<sup>TM</sup>

*Book & Lyrics by*  
**PETER SHAM**

*Music by*  
**KEVIN PURCELL**

*Based on the novel by David Dodge*

**WORLD PREMIERE!**

**Friday, March 14 & Saturday, March 15**  
**7:30 p.m.**

**Get your tickets now to be the first  
to experience this new musical**

**[WWW.SMTMKE.ORG](http://WWW.SMTMKE.ORG)**

# Knight | Barry

TITLE GROUP

Join the generations who have trusted Knight Barry Title to protect their most valuable investments. Our experienced title and closing professionals are ready to provide fast, accurate services to commercial and residential customers for their real estate, large and small.



Knight Barry Title, Inc.  
201 E. Pittsburgh Ave., Suite 200  
Milwaukee, WI 53204

## Protecting Your Property Rights Since 1854

Wisconsin . Minnesota . Michigan . Florida . Texas  
Find an office near you at [www.knightbarry.com](http://www.knightbarry.com)

THIS PROGRAM PROVIDED BY

# ENCORE

To generate sales for your business, advertise in any of our premium programs. Call Scott for more information:

**Scott Howland**  
*Sales & Marketing Director*

**414.469.7779**  
**[scott.encore@att.net](mailto:scott.encore@att.net)**

- Milwaukee Repertory Theater
- Milwaukee Symphony Orchestra
- Florentine Opera Company
- Milwaukee Ballet
- Broadway at the Marcus Center
- Skylight Music Theatre
- Sharon Lynne Wilson Center

Yes, there are field trips.  
And yes, we try to ditch  
the chaperones.



At Harwood Place Luxury Senior Living, you'll find the vibrant lifestyle you're looking for, the support you expect and a community full of friends to share it with.

**HarwoodPlace.org**

**H**  
HARWOOD  
PLACE

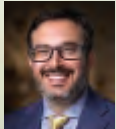
# Trust Your Health to One of Milwaukee's Most Respected Medical Practices.

It's important to choose a physician who will listen closely to your needs and respond genuinely to your concerns. Fortunately for you and your family, our physicians have been providing exceptional care in Milwaukee and Ozaukee for over 120 years.

## INTERNAL MEDICINE



Kathleen Baugrud, M.D.



Avi Bernstein, M.D.



John Betz, M.D.



Matthew Connolly, M.D.



Kevin DiNapoli, M.D.



Deidre Faust, M.D.



David Goldberg, M.D.



Scott Jorgensen, M.D.



Unchu Ko, M.D.



David Lucke, M.D.



Rachel Osterbaan, M.D.



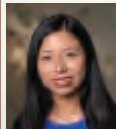
John Sanidas, M.D.



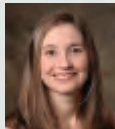
Abraham Varghese, M.D.



James Volberding, M.D.



Carmen Balding, M.D.



Camille Hessel, M.D.

## MOHS SURGERY

## ENDOCRINOLOGY



Amy DeGueme, M.D.



Elaine Drobny, M.D.



Antoni Gofron, M.D.



Usonwanne Ibekwe, M.D.



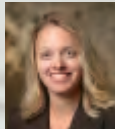
Brent Jones, M.D.



Kawaljeet Kaur, M.D.



Anne Lent, M.D.



Kristin Schroederus, M.D.

## ALLERGY & IMMUNOLOGY



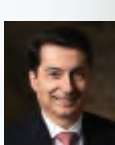
Keely Browning, M.D.



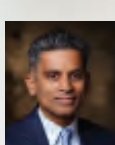
Abdullah Fayyad, M.D.



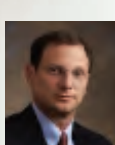
Gene Kligman, M.D.



Venelin Kounev, M.D.



Srihari Ramanujam, M.D.



Chad Stepke, M.D.

## GASTROENTEROLOGY



# MADISON MEDICAL AFFILIATES



**MADISON MEDICAL**  
MILWAUKEE · MEQUON

MadisonMedical.com | 414.272.8950

## DERMATOLOGY



Amanda Cooper, M.D.



Tracy Donahue, M.D.



Michael Kinabel, M.D.



Valerie Lyon, M.D.



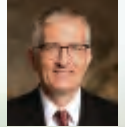
Jack Maloney, M.D.



Jason Rosenberg, M.D.



Debra Scarlett, M.D.



Thorsteinn Skulason, M.D.

## SURGERY



Heather Wells, M.D.



Richard Cattery, M.D.



Jasna Coralic, M.D.



Alyandra Lal, M.D.



Joseph Regan, M.D.



Craig Siverhus, M.D.



Jake Thayer, M.D.

## COMPREHENSIVE EYE CARE



Lisa Bennett, M.D.



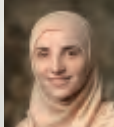
Alwin Edakkunnathu, O.D.



James Ivanoski, O.D.



Joseph Zlisch, M.D.



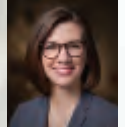
Dima Adl, M.D.



Jay Balachandran, M.D.



Nicolette Deveneau, M.D.



Erica Eggers, M.D.

## PULMONARY

## UROGYNECOLOGY

## UROLOGY

## OBSTETRICS & GYNECOLOGY



Kevin Gee, M.D.



Christopher Kearns, M.D.



Jonathan Berkoff, M.D.



Charles Chung, M.D.



Katya Frantskevich, M.D.



Shireen Jayne, D.O.



Jennifer Moralez, M.D.

# WHO'S WHO IN THE CAST



Miss Kyle  
Blair



SaraLynn  
Evenson



Seth K.  
Hale\*



Joe  
Picchetti



Josh  
Pope



Rick  
Richter



Jonathan  
Riker



Ashley M.  
Rodriguez



Mars  
Schultz



Stephanie  
Staszak

# BIOS

**Miss Kyle Blair (Condemned Man/The Creature)** Second show at Skylight! Miss Kyle has spent a sizeable portion of their career in international waters, performing with Disney Cruise Line as Kings, Clocks, and Genies, and originating the role of Hook Hand in *Tangled: the Musical*. They have worked regionally in Chicago, Portland, Memphis, Arizona, and Colorado; with the National Players - America's Longest-Running Touring Company (Olney, MD); and sometimes performs in drag as @greatauntmavis. Love to family and forever friends. Hi, Georgia!

**SaraLynn Evenson (Victor's Mother/Agatha)** joyfully returns after *School of Rock*, *Xanadu*, *The Full Monty*, *Zombies...* and *Oklahoma!* at Skylight. Recent credits are First Stage: *Arthur and Friends...*, *Diary of a Wimpy Kid*, Music Theatre Madison: *Hephaestus*, and many appearances with Musical MainStage and SideNotes Cabaret. Other favorites include National Tour: *A Christmas Carol*, NYC: *Urinetown*, *Dark Passenger*, Weathervane Playhouse: *Into the Woods*, *The Secret Garden*, *Witch Charity*, *Chicago*. Love to Derek, Vivienne and Dominic! saralynnnonstage.com

**Seth K. Hale\* (Victor)** is a full-time stage, screen, and commercial actor based out of Milwaukee, Wisconsin. Previous Skylight roles include Clopin in *The Hunchback of Notre Dame* and Orin in *Little Shop of Horrors*. Most recently he played Nick Massi in *Jersey Boys* at Farmers Alley Theatre and has been seen in film festivals around the country as Larry Gatlin in the short film adaptation of Stephen King's *The Last Rung on the Ladder*. For more information and updates visit [www.sethkhale.com](http://www.sethkhale.com).

**Joe Picchetti (Captain Walton)** is thrilled to be making his Skylight debut with *Frankenstein!* Recent regional credits include *Lumberjacks in Love* at MKE Rep, *Witch and Photograph 51* at Renaissance Theaterworks, *Airness* at Forward Theater, *The Lion In Winter* at MKE Chamber Theatre, *Preludes* at Milwaukee Opera Theatre, and *All Is Calm* at Vanguard Productions. Joe sends his love to his family, friends, Maddy, and Poe for their never-ending love and support.

**Josh Pope (Ensemble)** Josh Pope is ecstatic to return to the Cabot stage for this stirring production of *Frankenstein!* His Skylight credits include ensemble in *Waitress*, *SuperYOU*, and the external cover for *Candide* in *Candide* and *Sonny* in *Xanadu*. Other recent

roles include Jesus in *Jesus Christ Superstar* at Sunset Playhouse, Frederick Fellows in *Noises Off!* and Bob Cratchit in *Christmas Carol* at Falls Patio Players. As an MKE local, he also regularly performs with the Bel Canto Chorus. He sends his love to mom and dad!

**Rick Richter (Victor's Father/Blind Man)** is very happy to once again be on the Skylight stage! His previous roles here have been: Mr. Brownlow in *Oliver!*, Danny in *Xanadu*, Colonel Pickering in *My Fair Lady* & Professor Marvel/Wizard in *The Wizard of Oz*. A few of his other favorite roles in the area have been: Tevye in *Fiddler on the Roof*, King Arthur in *Camelot*, Gaston in *Beauty and the Beast*, and Scrooge in *A Christmas Carol*. Thanks so very much to everyone who supports him in his passion. Follow Rick at [www.rick-richter.com](http://www.rick-richter.com)

**Jonathan Riker (Henry)** In 2022, Jon graduated from Bucknell University where they majored in Theatre, Political Science, and Music. Recent credits include Francis in *La Cage Aux Folles* at Outskirts Theatre; Walton in *Anatomical Hearts* at Milwaukee Chamber Theatre; u/s Danny in *The Chosen* at Milwaukee Rep; Anthony in *Sweeney Todd* at the Pennsylvania Playhouse; Bruce in *Fun Home* at Bucknell University. Jon would like to thank his friends and family for their continuous love and support. [www.jonathanriker.com](http://www.jonathanriker.com)

**Ashley M. Rodriguez (Justine/Fight Captain)** is honored to return to Skylight. She was last seen with them in *Evita* as Peron's Mistress. Some other credits include various roles in Renaissance Theaterworks' *Brink Briefs*, understudy in *Almost, Maine* at Next Act Theatre, Alyssa Green in *The PROM* at Bombshell Theatre, Heather Chandler in *Heathers* with Outskirts Theatre Co., and Witch in *Into the Woods* at Forte Theatre. She completed her BFA at UW Parkside and her AFA at College of Lake County.

**Mars Schultz (Young Victor/William)** is excited to make his debut with Skylight Music Theatre in *Frankenstein: the Musical*. Recently, Mars portrayed the Miniature Nutcracker in *The Nutcracker: Drosselmeyer's Imaginarium* at Milwaukee Ballet. Other roles include Gargoyles in *Snow White* and Onion in *The Adventures of Cipollino*, both with Milwaukee Ballet School & Academy. Mars wants to thank his family for their support.

# BIOS CONTINUED

## **Stephanie Staszak (Elizabeth/Dance Captain)**

This is Stephanie's 17th production with Skylight! She was most recently seen performing on the Cabot Stage as Principal Rosalie Mullins in *School of Rock* and choreographed both *Xanadu* and *Oliver!* Nick-named the "Swiss Army Knife of Skylight," Stephanie also works administratively as an Artistic Associate. She feels very lucky to work consistently within the Milwaukee and surrounding theatre community, having also worked with MOT, InTandem, First Stage, Fireside Theatre and various high school and community theatres. Follow her on Instagram: @stephaniemarie11

## CREATIVE TEAM

### **Michael Unger (Director/Artistic Director)**

For Skylight, Michael has directed *Dennis DeYoung's The Hunchback of Notre Dame* (nine BroadwayWorld Awards – including Best Director and Best Musical), the Deaf and Hard of Hearing production of *Spring Awakening, Oliver!, Juliet and Romeo, School of Rock, Noises Off, Little Shop of Horrors, A Jolly Holiday: Celebrating Disney's Broadway Hits*, as well as *Me, Myself and I* for Skylight's Education program. Amongst many virtual offerings, he directed Skylight's BroadwayWorld Award-winning *Being Earnest*, now available worldwide online. He was previously the Associate Artistic Director of Off-Broadway's York Theatre; credits there included *You're A Good Man Charlie Brown* and *Big*. For nine years, he was the Producing Artistic Director of NewArts, started with a local father in response to the Sandy Hook Elementary School tragedy, directing 17 productions working with over 650 area-children. Other selected directing credits include *A Christmas Carol* (McCart Theatre for 18 years), *Two Point Oh* (NY Times Critics' Pick), *Time Stands Still* (Cape Cod Chronicle Best 2015), *My Sister in This House* (DeafWest, Ovation Recommended), and new versions of *Kander and Ebb's The Happy Time* and *The Rink*. World premiere directing credits include *The 25th Annual Putnam County Spelling Bee, Caligula*, and *A ROCKIN' Midsummer Night's Dream* (featured in the award-winning documentary film "Midsummer in Newtown"). He has directed 12 operas plus benefit concerts honoring Susan Stroman, André DeShields, Maltby and Shire, and Leslie Uggams, as well as for the communities of Sandy Hook, CT and Parkland, FL.

**Janna Ernst (Music Director)** With over 25 years of coaching and music directing experience, Janna Ernst has performed at opera and theater houses all over the country. She has held teaching positions at major universities and currently resides in Shorewood with her two daughters. Janna has a Bachelor of Music degree in Piano Performance from San Diego State University, a Master of Music in Collaborative Piano from the University of California, Santa Barbara and a Vocal Specialist degree from the University of Michigan.

### **Jayne Regan Pink (Movement Director)**

Jayne graduated from The Royal Ballet School and was Principal dancer with Northern Ballet Theatre from 1986-2000. Hailed as one of the finest dramatic dancers of her generation, Jayne has worked internationally as coach and répétiteur. Milwaukee Movement Director credits include *Happy Days, Neat, Witch, The Wolves, The Moors* (Renaissance Theaterworks); *Matilda, Chitty Chitty Bang Bang, Elephant and Piggie, and Urinetown*. (First Stage Children's Theater); *Happy Now, The Norman Conquests*, and *A Christmas Carol* (Milwaukee Rep). Upcoming projects include *Circle Mirror Transformation* for Next Act Theatre.

### **Jonathan Berg-Einhorn (Scenic Designer)**

(he/him) is a Chicago based scenic designer. Favorite design credits include *Hand to God* (Paramount Theatre); *Priscilla, Queen of the Desert* (Mercury Theater); *The Reclamation of Madison Hemmings* (American Blues Theater); *The SpongeBob Musical* (Kokandy Productions); *Hedwig and the Angry Inch* (Haven Theatre); *The Producers* (Music Theater Works); *Picasso at the Lapin Agile, The Christians* (Citadel); Associate designer for *Ernest Shackleton Loves Me* (Porchlight); *Babel, Isaac's Eye* (Jeff nominated, Redtwist). Jonathanbergeinhorn.com.

### **Smooch Medina (Lighting/Projection Designer)**

is thrilled to be working with a wonderful team of artists on *Frankenstein*. Smooch is a Chicago area designer whose other show credits include Projection Design for *Cabaret, Rent, Ernest Shackleton Loves Me* - Jeff Nominated (Porchlight Music Theatre) *Sheep Dog, London Road* (Shattered Globe), *The Watsons Go to Birmingham* (Chicago Children's Theatre), *Alice in Wonderland* (Governors State Uni-



# BIOS CONTINUED

versity) *A Swell in the Ground*, *Pilgrims*, and *A Life Extra Ordinary* (The Gift Theatre), *Women in Jeopardy*, *Silent Sky* (First Folio), *Saturn Returns* (Neo-Futurists), *Estrela Cruz [The Junkyard Queen]* (Halcyon Theatre), *The White Road* - Jeff Nominated (Irish Theatre of Chicago), *Tightwire* (Chicago Tap Theatre). He currently is the Technical Supervisor at Hemmens Cultural Center as well as the City of Elgin Special Events Dept. Smooch holds a BFA in Lighting Design from Columbia College Chicago.

**Misti Bradford (Costume Designer)** is a professional Costume Designer, Professor, and Department Chair at the University of Wisconsin-Parkside, and currently serves as the National Chair of Design, Technology, and Management for the Kennedy Center American College Theatre Festival. Selected regional design credits include: *Frankenstein: the Musical* and *Spring Awakening*, Skylight Music Theatre; Boswell, MHK Productions - Next Act Theatre (Nov. 2025), OffBroadway, 59E59 Theatres, 2022 and the Edinburgh Fringe Festival, 2019; *Happy Days*, and *Annie Jump and the Library of Heaven* (world premiere) Renaissance Theatreworks, *The Nerd*, *Murder for Two*, Milwaukee Repertory Theatre; *Pride and Prejudice*, Illinois Shakespeare Festival; *Murder for Two*, Merrimack Repertory Theatre; *Much a Do About Nothing* and *The Comedy of Errors*, Door Shakespeare; two seasons of *A Christmas Carol*, Children's Theatre of Madison; *Goosebumps the Musical* (world premiere) First Stage Children's Theater; *The Thanksgiving Play*, *Bus Stop*, Milwaukee Chamber Theatre, *The Flying Dutchman*, *Les Misérables*, *Man of Lamancha*, Utah Festival Opera and Musical Theatre. Misti produced five seasons as Resident Costume Designer and three seasons as Costume Crafts Supervisor and Wig Stylist with PCPA Theaterfest, (Santa Maria, CA) and has worked several seasons as a Costume Crafts Artisan for the American Players Theatre.

**Steve Tonar (Sound Designer)** is excited to be back designing at Skylight Music Theatre. He was last heard designing sound for skylight's *Waitress* and *Spring Awakening* and seen designing lights for Skylight's production of *Juliet and Romeo* and *Raisin*. Past favorite design credits at Skylight include *School of Rock* and *Ernest Shackleton Loves Me*. Steve is a freelance lighting designer, sound designer, and photographer based in Milwaukee, as well as Technical Director at Greenfield High.

**Terry Harper (Director of Production and Facilities)** is originally from Houston, Texas where he began his career as a Rock and Roll Lighting Designer, a Musical Theater Sound Engineer, and an Opera Technical Director. Opera has taken up most of his time, working for Texas Opera Theater, Central City Opera, Opera Omaha, Vancouver Opera, The Atlanta Opera, and most recently Houston Grand Opera. Terry spent 5 years on the road touring the world with magician David Copperfield. He also helped take Mr. Copperfield's show to Broadway for a limited, record breaking run.

**Kathleen Dickinson\* (Production Stage Manager)** is excited to be working with Skylight for the first time! Based in Chicago, favorite credits include: Alex Edelman's *Just for Us* (Tour); *Sanctuary City*, *Tribes*, *The Way West*, *Hushabye* (Steppenwolf Theatre Company); *Is God Is*, *The Moors*, *Traitor*, *33 to Nothing*, *Victims of Duty*, *Small Mouth Sounds*, *Fulfillment Center*, *Killing Game*, *Grey House* (A Red Orchid Theatre); *United Flight 232* (The House Theatre of Chicago).

**Jordan Ilyssa Angelo (Resident Assistant Stage Manager)** is thrilled to be a part of this thrilling production, making it her 18th show with Skylight! Originally from Rhode Island, Jordan relocated to Milwaukee to pursue her love of theatre. Skylight favorites include *Waitress*, *From Here to Eternity*, and *Dennis DeYoung's The Hunchback of Notre Dame*. Select Rhode Island credits: *42nd Street*, *The Sound of Music* (Theatre By The Sea), and *The Secret Garden* (Epic Theatre Company). Much love to her family and three kitties.

**Amaya Rockett (Props Supervisor)** is excited to be working on Skylight's production of *Frankenstein!* She has been involved in Milwaukee theatre for almost five years. Previously set designing shows such as *The Forgotten Girl* (First Stage), *AIDA* (Waukesha Civic Theatre) and *Zuri's Crown* (Bronzeshe Arts Ensemble). Her previous Properties work includes Black Arts MKE's *Mudrow*, and UW-Milwaukee's *Piggsville* and *Into the Woods*.

# BIOS CONTINUED

**Jamie Cheatham (Fight and Intimacy Director)** is a nationally recognized Fight Director and Certified Teacher with the Society of American Fight Directors (SAFD). His fight work includes such venues as the New York Shakespeare Festival, NYC Opera, the Alley Theatre (TX), Actors Theatre of Louisville (KY), and Juilliard. He worked on Broadway for the 2019 production of *King Lear*, starring Glenda Jackson, and in 2023 on *Purlie Victorious*. Local work includes Milwaukee Rep, Next Act, Renaissance Theatertworks, and Skylight Music Theatre.

**Mark Baron (Composer)** is a renowned musician, arranger and musical director who has performed with numerous global music legends, including 48 Rock & Roll Hall of Fame inductees. Currently the musical director for Grammy® winner Gloria Gaynor, he also serves as an arranger for NBC's *The Voice*. His collaborations include icons such as Andrea Bocelli, Aretha Franklin, and the Beach Boys, as well as performances with the Award winning Metropole Orchestra, the Glenn Miller Orchestra, and Harry Connick Jr. Mark has also been seen on *The Today Show*, *Good Morning America*, *PBS*, and *Dick Clark's New Year's Rockin' Eve*.

**Gary P. Cohen (Story Adaptation)** recently retired after 30+ years as Producing Director for Plays-in-the-Park (Middlesex County, NJ). His diverse career includes theatrical agenting (William Morris Agency), founding Celebration Playhouse, acting, and set/lighting design. He authored *The Community Theater Handbook* and *The Theater Director's Primer*. Cohen also wrote librettos for four children's musicals (including one with John Sebastian) and directed three horror films and an award-winning documentary. Currently, he plays guitar and banjo in two bands.

**Jeffrey Jackson (Book & Lyrics)** began his career in advertising as a graphic designer. In film, he wrote and directed the award-winning short, *Our First Fight* and his feature-length screenplay, *White Collared*, won Best Screenplay at the Santa Barbara Film Festival. His play, *Two Point Oh*, was a "Critic's Pick" in the NYTimes which praised it as "smart, provocative, and funny." Jeff also wrote, directed, and produced the groundbreaking hybrid video game/movie *Daemon 9* ("an astonishing achievement" –The Horror Network) and also directed and co-wrote the NYMF Festival winner *Love in the Middle Ages*.

**Mary Shelley (Author of *Frankenstein*)** born Mary Wollstonecraft Godwin, an English novelist best known for her Gothic novel *Frankenstein; or, The Modern Prometheus*. Daughter of philosopher William Godwin and feminist Mary Wollstonecraft, she married poet Percy Bysshe Shelley. In 1816, while vacationing in Switzerland, she conceived the idea for *Frankenstein*, publishing it in 1818. Shelley also wrote other novels, short stories, and essays, establishing herself as a significant figure in the Romantic movement.

**Broadway Licensing Global ("BLG")** and its imprints (Broadway Licensing, Dramatists Play Service, Playscripts, Stageworks) lead in theatrical licensing. Representing top authors like Katori Hall, Alan Menken, and Tennessee Williams, plus *Harry Potter*, their catalog boasts 40 Tony® and 49 Pulitzer wins. Launched in 2017, they quickly became a dominant force, with many top-produced plays in professional and high school theatre. Their streaming platform, Broadway On Demand, offers exclusive content. Stageworks Productions develops new theatrical works performed worldwide. Their goal: make everyone a theatre person.

**Susan Varela (Executive Director)** Originally from Milwaukee and a graduate of UW-Stevens Point, her professional career as a performer landed her in New York City for 20 years. She performed on Broadway in *Les Misérables* and at Radio City Music Hall in *The Music of Andrew Lloyd Webber*. Other notable performances include *Jo March* in *Little Women: The Musical*; *Grizabella* in *Cats* and *Eva Peron* in *Evita*. Susan performed in world premieres at both the Denver Center Theater (for their Tony-award winning season) and the Yale Repertory Theater. Before joining the Skylight staff, she appeared on the Cabot stage in *Sweeney Todd*, *Into the Woods*, *The Wizard of Oz*, and *Les Misérables*. Susan has produced, directed, performed and written for the stage and television alongside her husband, actor Andrew Varela. Susan currently serves on the board of directors for Brew City Opera and The Historic Third Ward Association. Susan is honored to be a new member of TEMPO - a group of executive women leaders from Milwaukee and SE Wisconsin.

Help Skylight Music Theatre bring the *divine* inspiration of **Sister Act** to life! We invite you to become a vital part of this joyous production hit from nine-time Oscar-winner Alan Menken.

## SISTER ACT

Your **generous** support, at any level, will directly contribute to the *magic* on stage, from **dazzling costumes** and **intricate set pieces** to the **powerful performances** that will uplift and inspire. Explore the opportunities below to sponsor specific elements of **Sister Act** and leave your mark on this unforgettable theatrical experience.

You can sponsor a character, costume, or even help create the wonderful stained glass in the convent for **Sister Act**.

For your support, you'll receive tickets to the show and a special invitation to our very own BINGO Night hosted by the legendary **Sister Mary Ruthie!**



### \$2,500: Costume Sponsor

What would these characters be without their signature habits? Be our costume sponsor and ensure our Holy Order of the Little Sisters of our Mother of Perpetual Faith are ready to rejoice on opening night!



### \$5,000: Character Sponsor

Support your favorite Sister and make sure they hit those high notes in the choir loft!

Choose from Delores, Sister Mary Patrick, Sister Mary Robert, or even Mother Superior!



# More Sponsorship Opportunities

## **Set Sponsor: \$5,000 to \$10,000**

Help to bring our productions to life by supporting the set design for this classic musical!

## **Associate Producer: \$25,000**

Join the producing team and be a part of the magical journey to bring a show to the stage.

## **Producer: \$50,000**

Select this option and watch as the production develops, knowing that your support inspired our actors, designers, and technicians.

## **Executive Producer: \$100,000**

Choose this exclusive opportunity and become the lead supporter for an incredible production of your choosing.

**The future of music theatre in Milwaukee depends on donors like you. Partner with Skylight and become a vital part of Milwaukee's Home for Music Theatre. Your tax-deductible gift is an investment in exceptional performances and help continue our outstanding education program.**

**Join us in making a difference - your sponsorship, donation, or gift, at any level, ensures the curtain will rise on our next season.**

***Other sponsorship opportunities available. Please reach out to us at [Development@SkylightMusicTheatre.org](mailto:Development@SkylightMusicTheatre.org) or (414)299-4974 to discuss the possibilities.***



# SKYLIGHT MUSIC THEATRE CIRCLE OF DONORS

## Thank You To Our Donors!

Skylight gratefully acknowledges the following individuals, foundations, organizations, businesses, and government groups who provided generous support. Each helped Skylight to deliver exceptional music theatre productions and arts education programs for the benefit of the greater Milwaukee community. Unfortunately, there was not space to recognize donors whose gifts under \$250 have also contributed to Skylight's success. Please refer to our website for a complete list of donors.

### **RICHARDSON CIRCLE**

**\$400,000 and above**

United Performing Arts Fund

### **BENEFACTOR CIRCLE**

**\$25,000-399,999**

Anonymous

The Lynde & Harry Bradley Foundation

Four-Four Foundation, Inc.

Greater Milwaukee Foundation

Heartaches Limited

Richard & Ethel Herzfeld Foundation

JJF Management Services Inc.

George H. and Virgilee F. Krueck Fund

at the Greater Milwaukee Foundation

Jan Serr & John Shannon

The Estate of Donald Whitaker

We Energies Foundation

### **STAR CIRCLE**

**\$10,000-24,999**

Bob Balderson

Barb & Mark Bolens

Quarles & Brady LLP

Roger Dickson and Linda Cesario

Valerie Johnson

Moira J. Kelly

Howard & Sara Miller

Susan Nichols

Carol Greif & Kevin Schuele

Irene Pilugin Skipper & Walt Skipper

The Shubert Foundation, Inc.

Maxine & David Unger Family Fund

Wisconsin Arts Board

Wispect Foundation

Liz Levins & Herb Zien

### **SPONSOR CIRCLE**

**\$5,000-9,999**

Anonymous

Bonnie & Barry Behnken Family Charitable Fund

Barbara Brumder Buzard Fund

at the Greater Milwaukee Foundation

T. Arthur & Rhonda Downey

Caroline Draves Fund

at the Greater Milwaukee Foundation

Laura & John Emory, Jr.

Alec and Kristin Fraser

Ralph G. Gorenstein Charitable Foundation

Sandy & William Haack

David & Judith Hecker

Margaret Heminway Wells Fund at

the Greater Milwaukee Foundation

Greg and Kristen Hobbs

Patricia Ray Howell Fund

at the Greater Milwaukee Foundation

Judy & Gary Jorgensen

Ken Dortzbach & Jennie Kent

Lindsey & Kyle Kopps

Justine Leonard Charitable Fund

The Maihaugen Foundation

Mary McNulty

Milwaukee Arts Board

Asher & Susan Nichols Family Fund

at the Greater Milwaukee Foundation

Northwestern Mutual Foundation

Jane Bradley Pettit Foundation

Marcia JS Richards

Blaine & Linda Rieke

Margaret Rosko

Gary Sinise Foundation

Bert L. & Patricia S. Steigleder

Charitable Trust

Stollenwerk Family Charitable Foundation

Gloria Tracy

The Valentine Fund

of the Cream City Foundation

William Wightman & Beatrice Jones Winkler Fund

at the Greater Milwaukee Foundation

Richard and Kay Yuspeth

### **PRODUCER CIRCLE**

**\$2,500-4,999**

Anonymous

Baird Asset Management

F. Tessa & Richard Bartels

Chris Behling

Larry Bialcik

# SKYLIGHT MUSIC THEATRE CIRCLE OF DONORS

## PRODUCER CIRCLE (cont)

**\$2,500-4,999**

Laura Mikeworth & Jeffrey Bono  
Elizabeth & Brian J. Casey  
Dr. Carl W Eberbach & Elisabeth Falk  
Eberbach Fund at the Greater  
Milwaukee Foundation  
Gerald & Sue Falci  
Mary Lou Findley  
Tim & Sue Frautschi  
Judy & David Hecker  
Judy & Gary Jorgensen  
Moira Fitzgerald & Peter Kammer  
Kristine & Terrance Kurtenbach  
Pat Lombardo  
Sally Long & Franklin Loo  
Tonya & Mike Lueder  
Luedke-Smith Fund  
at the Greater Milwaukee Foundation  
KeleMarie Lyons  
Dawne & Ray Manista  
Mensa of Wisconsin Foundation  
Patrick Mutsune  
Tim Mikeworth  
Mary Norton  
M Kathleen Ronan Estate  
Sempercor Foundation  
at the Greater Milwaukee Foundation  
Sikich LLP  
Liz Tannebaum  
Michael Unger  
Andrew & Susan Varela  
Carole and Phil Walther  
Sue E. Wells

## DIRECTOR CIRCLE

**\$1,000 -2,499**

George Banda  
Thomas & Sally Basting  
Lois Bernard  
Carolee Beutler  
Mark & Karen Bitzan  
Charles Bley  
Bill & Barbara Boles  
Rick J. Brewer  
Mr. & Ms. Michael Bula  
Shirley E. Butzin Charitable Fund  
Briggs & Stratton Corporation Foundation  
John & Susan Brown  
C3 Designs  
John Cegielski  
Margaret & B. Lauren Charous  
Jane & William Crise  
Karen & Jim D 'Ambrisi  
Dominion Energy Charitable Foundation

Drs. Karin & Peter Drescher  
Steve & Buffy Duback  
Heather & Brian Dunn  
Mary & John Emory  
Giacomo Fallucca  
Maja Jurisic & Don Fraker  
Foley & Lardner LLP  
Robert Gardenier and Lori Morse Gardenier  
Virginia & Mark Gennis  
Gottlob Armbrust Family Fund  
Joe & Gwenn Graboyes Charitable Fund  
at the Door County Community Foundation  
W.A. Hamwright Jr.  
Arlene Hansen  
Leila & Joseph Hanson  
Cheryl & Roy Hauswirth  
Christine & John Hojnacki  
Bill Kadrach  
Eileen Kamerick  
Susan & Donald Kerber  
Michael & Maureen Klein  
Linda & William Koenig  
Pam Kriger Donor Advised Fund  
of the JFC of the MKE Jewish Federation  
Sandra Laedtke  
Lee Marquardt  
Mr. & Mrs. Francis Matusinec  
Mr. & Ms. Guy D. McDonald  
The Anne & Tom Metcalfe Family Fund  
Michael Best & Friedrich LLP  
Christine Mortensen  
Denis Murray  
Laurie Ocepek  
Jane O 'Connell  
Larry & Bonnie Paplham  
Clare M. Peters Charitable Trust  
John Peters  
Candy & Bruce Pindyck  
Melanie & Frank Popa  
Robert W. Baird & Co., Inc.  
Robert W. Baird Foundation  
Ryan Rosmann  
Patricia & Charles Roy  
Tom Schrader  
Joanne & Vincent Shiely  
Mark & Karen Sostarich  
Audrey J. Strnad  
Gregg Sustache  
Joy Towell  
US Bank Foundation  
Vasques Family Foundation  
Cheryl & David Walker  
Bill & Gwen Werner  
William Stark Jones Foundation

# SKYLIGHT MUSIC THEATRE CIRCLE OF DONORS

## **DIRECTOR CIRCLE (cont)**

**\$1,000 -2,499** Lee Wolcott  
Diane & Dick Wright  
Leslie Hauser & Karl Wuesthoff  
Joan and Robert Ziegler  
Joseph & Maryann Zompa

## **DESIGNER CIRCLE**

### **\$500 - 999**

Anonymous  
Betty Arndt  
Marc and Marta Bianchini  
Mary & Jack Bridges  
Larry Bonney  
Monica Brammer  
Kathryn & John Buono  
Burns Schrader Fund  
at the Greater Milwaukee Foundation  
Allen Cain  
Glenn Cain  
Dominique Delugeau  
Janet Dunst  
Fancy Pants Pet Salon  
Gerald & Patricia Freitag  
Rocio & Joe Froehlich  
Ralph & Paula Garcia  
Beth Gerlach  
Mary Gingrass  
Loyal D. Grinker  
Margarete & David Harvey  
Harold Horneffer  
Ironwood Family Fund  
Nancy Jacobs  
Johnson Controls Foundation  
Matthew Kacergis  
Diane & Richard Kane  
Judith & William Kay  
Peggy Knaapen  
Ann Krueger  
Sandra & Dale Landgren  
Todd & Ruth Laszewski  
Ellen Hing & Christopher Leadley  
Barbara Jean Lee  
Lois Malawsky  
Steve & Mary Rose Marinkovich  
Dr. & Mrs. Francisco J. Martinez  
Michele Marsh  
Lori Miller  
Michelle & Michael Nast  
Jean Novy  
Monica Orr  
Barbara Peters  
Matthew & Laurie Piette  
Patricia Struna  
Jackie & Way Thompson

David & Janet Tomczek  
at the Renaissance Charitable Foundation  
Valerio Dewalt Train Assoc.  
Marilyn White  
Kathleen & Donald Wilson

## **CHOREOGRAPHER CIRCLE**

### **\$250-499**

Anonymous  
Patsy & Richard Aster  
Shannon & Nathan Bernstein  
Francis & Pat Bock  
Jill Broekhuizen  
Jan & Dan Brophay  
Sally & Ian Bund  
Gabriel & Mary Ceci  
Valerie Chamberlain  
Stephen & Jane Chernof  
Catherine & Mario Costantini  
Moira Conzelman  
Louis Crocco  
Nancy & Michael Dunham  
Foster Family Foundation  
Stanley & Janet Fox  
Elizabeth Garibaldi  
Candace Hoffman & David Gaura  
Margaret Hader  
Marcia Brooks & Edward Hammond  
Judith & John Hartl  
Maryeve & Rob Heath  
Susan Heymann  
Kathleen & John Hickey  
Matt Honigman  
Ron Jacquart  
Jacqueline & Jeffrey Jahnke  
Pauline & Thomas Jeffers Charitable Fund  
Pat & Ron Jodat  
Darnelle Kaishian  
Colleen Lese & Thomas Karakis  
Michele Kenner  
Patricia & Robert Kraft  
Mr. Kenneth C. Krei  
Bernard & Judith Kristal  
Charlotte Scholl-Krokosky & Henry Krokosky  
A. Kipp Koester  
Jeanne Kuelthau  
Alice Kuramoto  
David Lee  
Peter Lovance  
Melissa & Chris Marschka  
Bill & Maureen Michaels  
Debbie Prater Mitchelson & Mark Mitchelson  
Michael Moorhead

# SKYLIGHT MUSIC THEATRE CIRCLE OF DONORS

## CHOREOGRAPHER CIRCLE (cont)

**\$250-499**

Jack & Lucia Flynn at the Murtaugh Fund  
Janet & David Olsen  
Tracey Olson  
Molly Perillo  
Saralynn Evenson & Derek Peruo  
Cecilia Taylor & Fred Pike  
Thomas Savage  
Michael Schall  
Joseph Silvers & Amy Rabideau Silvers  
James Moore & Paul Stabell  
George & Eileen Stone  
David Svejda  
Tom & Michele Tiffany  
Francesca Mayca Wegner  
Will Brewer & Brian Wenzler  
Dennis & Kathleen Wicht  
Adam & Lee-Ann Wiensch  
Katrene Zelenovskiy

## TRIBUTE GIFTS

In Honor Barbara Bolens  
Steven and Buffy Duback  
In Honor of Hanna Buchler & Dan Janssen  
Lee Calvey  
In Memory of Karen Finerty  
Theresa Tuttle and Michael Murphy  
In Memory of Katie Gingrass  
Christine and Steven Anderson  
Diane and David Buck  
David and Terry Gingrass  
Mary Gingrass  
Ruedi and Julie Gingrass  
Elaine and Randall Hoth  
Valerio Dewalt Train and Assoc  
In Memory of Stella Maria Hartel  
Carolyn Averill  
Laura & Tim Barron-Weiss  
Michelle Hartel  
Martha & Jeff Prideaux  
In Memory of Amy Brinkman-Sustache  
Danielle Kuepper  
In Memory of James Yuen  
Joan Yuen

## IN-KIND DONORS

American Players Theatre  
Baird Asset Management  
Ben & Jerry's MKE  
Benson's Restaurant Group  
David Bonofiglio  
C3 Designs  
Club Charlie's

Roger Dickson and Linda Cesario  
Discovery World  
Door Shakespeare  
Fancy Pants Pet Salon  
Freese's Candy Shoppe  
Ken Dortzbach & Jennie Kent  
Greenfield High School  
Julia Grey  
Susan Heymann  
Kimpton Journeyman Hotel  
Valerie Johnson  
Marcus Center for the Performing Arts  
Milwaukee Art Museum  
Milwaukee Balloon Company  
Milwaukee Chamber Theatre  
Milwaukee Public Museum  
Debbie Prater Mitchelson & Mark Mitchelson  
Next Act Theatre  
Noble Catering  
Northern Sky Theatre  
Onesto  
James Ortiz  
Peninsula Players  
Punch PR  
Saint Kate Arts Hotel  
Savaglia Financial Advisors  
Shake Shack  
Walt Skipper & Irene Pilugin Skipper  
Thief Wine Shop & Bar  
Third Avenue Playworks  
Michael Unger  
Susan & Andrew Varela  
Meghan & Nick West

## MATCHING GIFT ORGANIZATIONS

Cybergrants  
Dominion Energy  
Fidelity Charitable  
State Farm Companies Foundation  
US Bank  
We Energies Foundation

*Donors listed reflect gifts made between  
July 1, 2023 and January 31, 2025*

*We make every effort to ensure that Sky-  
light donors are recognized appropriately.  
If we have made an error, please accept  
our sincere apologies and contact our  
**Development Office at 414.299.4974**  
with any corrections.*

Many thanks to our community partners  
Visit Milwaukee and the  
Historic Third Ward Association.



# SKYLIGHT MUSIC THEATRE STAFF

Michael Unger  
**Artistic Director**

Susan Varela  
**Executive Director**

## ARTISTIC

Orchestra Contractor ..... Michael "Ding" Lorenz  
Casting Associate ..... Stephanie Staszak  
Artistic Associate ..... Courtney Giovinazzo  
Casting Consultant ..... Alexander Coddington

## BOX OFFICE

Box Office Manager ..... Kelley Arlt  
Box Office Supervisors ..... Maureen Kailhofer,  
Rylee Zuniga  
Box Office Staff ..... Anna Mikula,  
Audwin Short, Zed Waeltz,  
Deanne Walter, Sian Whitney

## DEVELOPMENT

Director of Development ..... Sharon K. Rise  
Development Associate ..... Georgie Pink

## EDUCATION

Education Manager ..... Fred Diggins  
Education Associate ..... Alexandria Cimoch  
Teaching Artists ..... James Donaldson,  
Krista Laszewski,  
Hayden McCullough,  
Eugene Strei

## FACILITIES

Building Operations Technicians ..... Robert Boose  
Perris Cannaday-Bey

## FINANCE

Director of Finance ..... Stacy Tatum

## HOUSE MANAGEMENT

Lead House Manager ..... Cat Sadler  
House Managers ..... Jamie Gossen,  
Sanaa Harper, Sandi Lash,  
Oakley Mertes, Nate Press,  
Zed Waeltz, Dawn Wenzell,  
Elliot White

## MARKETING

Director of Marketing ..... Meghan West  
and Communications  
IT/Database Manager ..... Christopher Johnston

## PRODUCTION

Director of ..... Terry Harper  
Production and Facilities  
Studio Theatre Lighting/ ..... Anthony Metz  
Audio Supervisor  
Resident Assistant ..... Jordan Ilyssa Angelo  
Stage Manager

## SCENIC

Head Carpenter/ ..... Islay Reed  
Fleet Manager

## LIGHTING

Lighting Supervisor ..... Dovie Roberts

## COSTUMES

Costume Director ..... Jeanne Schrank  
Wardrobe Supervisor ..... Courteney Shipley

## SOUND

Audio/Video Supervisor ..... Jack Albert  
Audio Support ..... Steve Tonar

## PROPS

Properties Supervisor ..... Amaya Rockett

## EVENT SERVICES

Bar Managers ..... Janna Ernst, Mel Penner  
Bar Staff ..... Molly Burke,  
Courtney Giovinazzo,  
D Eric Woolweber

# SKYLIGHT MUSIC THEATRE BOARD OF DIRECTORS

## Valerie Johnson, PRESIDENT

Mary McNulty, President Elect  
Michael C. Lueder, Secretary  
Barbara Bolens, Treasurer and VP of Finance

Roger Dickson, VP of Development  
Lindsey Kopps, VP of Governance  
Mary Bridges, VP of Marketing  
David Lee, VP of Strategic Planning

Bob Babisch  
F. Tessa Escamilla Bartels  
Nathan Bernstein  
Amanda Collins  
Alec Fraser

W. Albert Hamwright  
Robert Heath  
Marni King  
Dr. Michael Laska  
Laura Mikeworth

Howard Miller  
Jeffrey M. Speller  
Herb Zien  
Colin Cabot (Honorary)

## PAST PRESIDENTS

(Chronological)

Clair Richardson  
Dale Sorden  
Allen Slichter  
George Kruet  
Timothy Frautschi  
Mary Emory  
Mary Pollock  
Jack Gardner  
Dick Wright

Byron Foster  
Nick Owen  
Sue Frautschi  
Jeff Nohl  
Asher Nichols  
Matt Flynn  
Larry Salustro  
Howard Miller  
Suzanne Hefty

Terry Kurtenbach  
John Stollenwerk  
David Harvey  
John Flanagan  
Alec Fraser  
Michael C. Lueder  
Marta Bianchini  
Brian D. Till

## ADVOCATES

**CHAIR** – Laura Emory

Betty Arndt  
Carol Bayerlein  
Polly & Robert Beal  
Marta & Marc Bianchini  
Katherine & William Biersach  
Wendy & Richard Bliss  
Morton Blutstein  
E.J. Brumder, Jr.  
Patricia & Phillip Crump  
Mary & John Emory  
Mary & Matthew Flynn  
Laura Foote  
Gabrielle & John Franke  
Susan & Timothy Frautschi  
Gwenn & Joseph Graboyes  
Suzanne Gromme  
Lindsay Holbrook Hammerer  
& Peter Hammerer  
Arlene Hansen  
Katie Harding & James Pionkoski  
Cheryl & Roy Hauswirth  
Grace McBain Haydon  
Mary Huntington

Sharon & Ted Hutton  
Judy & Gary Jorgensen  
Jeanne & Richard Kessler  
Susan & Robert Kinde  
Tracey & Richard Klein  
Kipp Koester  
Marie Kohler & Brian Mani  
Patricia & Robert Kraft  
Roz Krause  
Pam Kriger  
Konrad Kuchenbach  
Kristie & Terrance Kurtenbach  
Emilia & Christopher Layden  
Elizabeth Levins & Herbert Zien  
Sally Lewis  
Rose Mary & Frank Matusinec  
Sandra & Michael McNeely  
Donna & Anthony Meyer  
Theodore & Kelsey Molinari  
Susan Nichols  
Jeff Nohl  
Jody Nolan  
Joe Nolan  
Barbara Notestein  
Jane S. O'Connell

Candy & Bruce Pindyck  
Nancy Pinter & R. Max Samson  
Roberta & Larry Polacheck  
Ildy & Skip Poliner  
Hattie Purtell  
Gordana & Milan Racic  
Kristine & James Rappe  
Linda & Blaine Rieke  
Lee Dougherty Ross & Jerold Ross  
Patricia Roy  
Kathleen & Thomas Schrader  
Carol & Kevin Schuele  
Marsha Ruth Sehler  
Maureen & Larry Sherkow  
Joanne & Vincent Shiely, Jr.  
Paige Sinden  
Lisa & Paul Sweeney  
John W. Taylor  
Pauline & Calvin Verbrugge  
Anne & Tom Wamser  
Gwen & William Werner  
Nora Werra  
Kathleen & David Williams  
Richard Wright



EASTCASTLE PLACE



# *Experience Harmony* IN SENIOR LIVING

With a legacy spanning nearly 140 years, Eastcastle Place has been a welcoming Life Plan Community, providing a continuum of care tailored to meet the evolving needs of our residents. Nestled in Milwaukee's vibrant East Side, our community has recently undergone exciting transformations, featuring newly renovated spaces such as an inviting dining room and bar. Join us in embracing a lifestyle that honors our rich history while looking ahead to an even brighter future.

**Call (414) 519-9477 or visit  
Eastcastleplace.com.**

**2505 East Bradford Avenue  
Milwaukee, WI 53211  
Eastcastleplace.com**

Managed by  Life Care Services        

Frankenstein: The Musical **31**

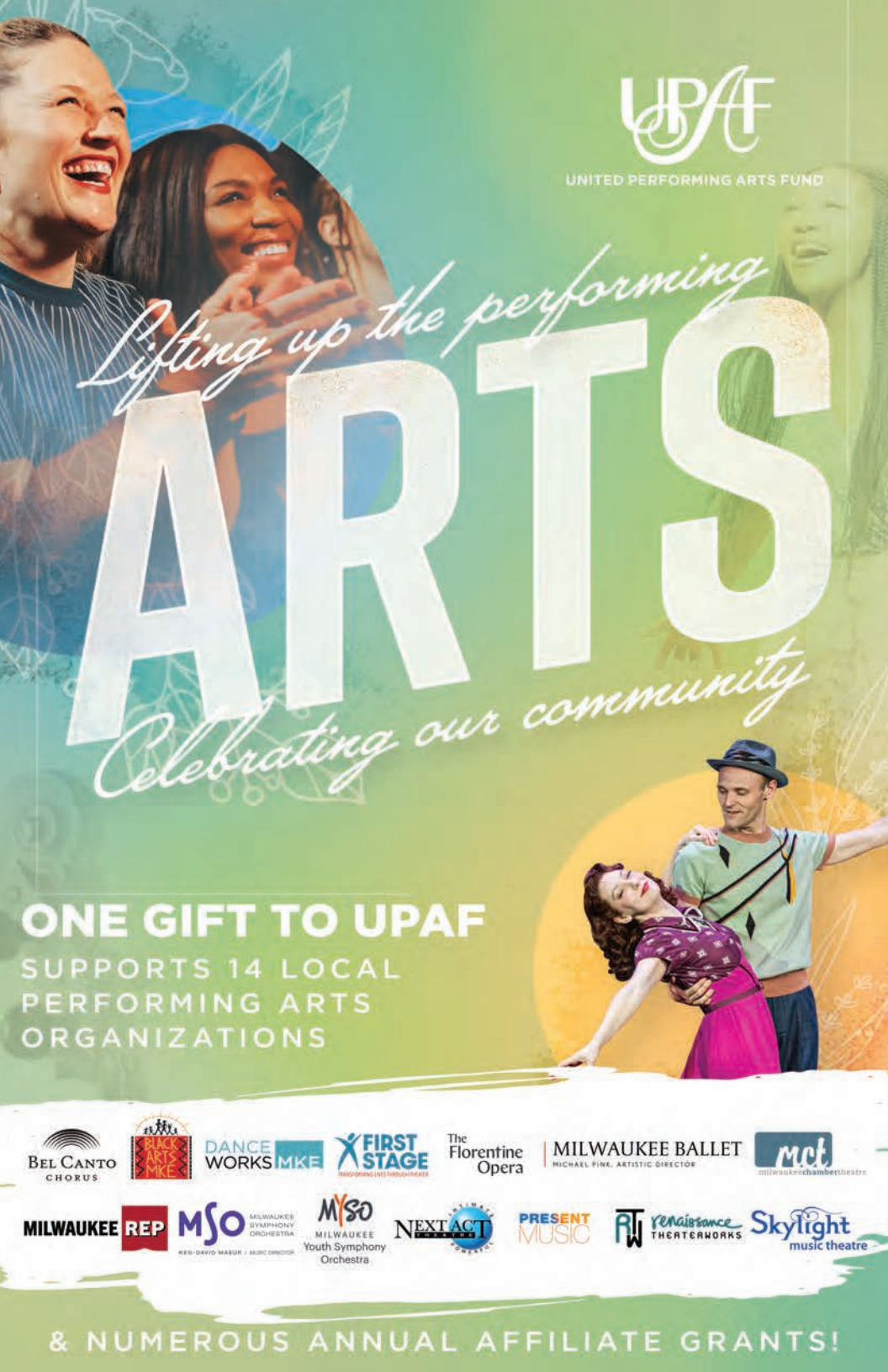


UNITED PERFORMING ARTS FUND

*Lifting up the performing*

# ARTS

*Celebrating our community*



## ONE GIFT TO UPAF

SUPPORTS 14 LOCAL  
PERFORMING ARTS  
ORGANIZATIONS



& NUMEROUS ANNUAL AFFILIATE GRANTS!