

Skylight
music theatre

**2022-2023
SEASON**



May 26 – June 18

A Great Community On a Great Lake!



Jean & Alan Hilgeman, formerly of Brookfield, enjoy their care-free lifestyle at Saint John's and the natural beauty of the nearby Oak Leaf Trail.

The best in senior living includes...

- A culturally respectful and intellectually stimulating community
- More than 200 events to enjoy every month
- Unlimited campus amenities to enjoy with family and friends.



Call us to learn more about life at Saint John's!

SAINT JOHN'S
ON THE LAKE



SCAN ME

www.SaintJohnsMilw.org 414-831-6900

1840 North Prospect Avenue, Milwaukee, Wisconsin 53202

THIS PROGRAM PROVIDED BY

ENCORE

To generate sales for your business, advertise in any of our premium programs. Call Scott for more information:

Scott Howland
Sales & Marketing Director

414.469.7779
scott.encore@att.net

- Milwaukee Repertory Theater
- Milwaukee Symphony Orchestra
- Florentine Opera Company
- Milwaukee Ballet
- Broadway at the Marcus Center
- Skylight Music Theatre
- Sharon Lynne Wilson Center



Knight | Barry
TITLE GROUP
Our People. Your Success.

With hundreds of experienced title and closing professionals and a skilled staff of problem solvers in over 80 offices in Wisconsin, Michigan, Minnesota, Florida and Texas, Knight Barry Title is ready to provide fast and accurate services to commercial and residential customers...both large and small.

WWW.KNIGHTBARRY.COM
Knight Barry Title, Inc., 201 E. Pittsburgh Ave., Suite 200, Milwaukee, WI 53204

Skylight
music theatre

2023-2024 SEASON

Skylight is back for its **64TH SEASON!**

CANDIDE

Oct. 13 - 29, 2023

SCHOOL OF ROCK

Nov. 17 - Dec. 30, 2023

XANADU

Jan. 26 - Feb. 11, 2024

SPRING AWAKENING

March 1 - 17, 2024

FROM HERE TO ETERNITY

April 12 - May 5, 2024

SUBSCRIPTIONS STARTING AT

\$87!

FOR 3 SHOWS

\$125!

FOR 5 SHOWS

(414) 291-7800 • www.skylightmusictheatre.org

158 N. Broadway
in Milwaukee's Historic Third Ward

THANK YOU FOR SUPPORTING US!

OUR MISSION SINCE 1959:

To bring the full spectrum of music theatre works to a wide and diverse audience in celebration of the musical and theatrical arts and their reflection of the human condition.

WE FULFILL THIS MISSION THROUGH:

- Serving as the largest employer of Wisconsin actors in the State.
- Offering educational programming that reaches over 14,000 students annually.
- Engaging more than 30,000 people at performances each year.
- Serving as a conduit for developing new musicals.
- Partnering with nationally recognized directors, designers, actors and musicians.

PLEASE CONSIDER A DONATION TO SKYLIGHT:

We sincerely appreciate a donation of any amount. Thank you for your support of Skylight Music Theatre and the arts.

Please donate at the
QR code below



Are Your Home & Yard in Harmony?

Book Now for Your Yard Makeover



David J. Frank
Landscape Contracting

Request a quote today at davidjfrank.com

Southeastern Wisconsin's premier landscaping company

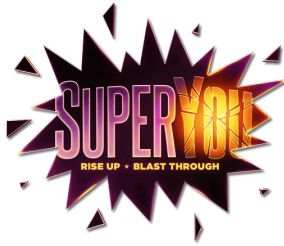
Michael Unger
Artistic Director



Susan Varela
Executive Director

All Awesome/Melissa M. Jones, Sam Arce Mary Maggio Jeffrey Neuman,
Jan Warner, Create2Connect, Dan Frishwasser

PRESENTS



Book, Music, and Lyrics by
LOURDS LANE

May 26 - June 18, 2023 | CABOT THEATRE | BROADWAY THEATRE CENTER

DIRECTOR AND CHOREOGRAPHER

JOANN M HUNTER***

MUSIC SUPERVISOR
WENDY BOBBITT CAVETT

MUSIC DIRECTOR
BRYSON BAUMGARTEL

SCENIC DESIGNER
ANN LOUIZOS**

COSTUME DESIGNER
CYNTHIA NORDSTROM**

LIGHTING DESIGNER
JAMIE RODERICK**

SOUND DESIGNER
CHAD PARSLEY

VIDEO DESIGNER
PATRICK W. LORD**

PRODUCTION STAGE MANAGER
KELLY RUTH COLE*

CASTING
**WOJCIK CASTING TEAM AND
SKYLIGHT MUSIC THEATRE**

ARRANGEMENTS AND ORCHESTRATIONS
**LOURDS LANE AND
WENDY BOBBITT CAVETT**



* Appearing through an agreement between Skylight Music Theatre and Actors' Equity Association, the Union of Professional Actors and Stage Managers in the United States.



** The Scenic, Costume, Lighting and Video Designers are represented by United Scenic Artist, Local USA-829.



*** The Director / Choreographer is a member of the Stage Directors and Choreographers Society, and independent national labor union.

SEASON SPONSORED BY



This program is supported in part by a grant from the Wisconsin Arts Board with funds from the State of Wisconsin and the National Endowment for the Arts.

The videotaping of this production is a violation of United States copyright law and actionable federal offense.

A MESSAGE FROM THE ARTISTIC DIRECTOR, MICHAEL UNGER



SuperYou is a super musical and we are proud to be hosting its world premiere developmental presentation. *SuperYou* is Skylight Music Theatre's entry into the World Premiere Wisconsin festival, presented by Ten Chimneys Foundation. Nearly fifty theatres across the state are presenting new works this spring to celebrate statewide collaboration in a way that has never been attempted before – in Wisconsin, or anywhere, so far as we can tell. This feat is even more impressive when you look at the disappointing statistic that has the state of Wisconsin weighing in dead last (50 out of 50) in terms of per capita state funding spent on the Arts – merely 14 cents. Illinois to the south spends just over \$5 per capita, Minnesota to the west spends \$7.34. You/we, can help change that by reaching out to local legislators to demand better. The Arts sector here supports local economies, offers thousands of jobs, helps make Milwaukee a major,

vibrant city, and so much more. Let's work together to not be last next year. The Arts make a difference. Live Theatre makes a difference. The show you are about to witness will make a difference.

The creative SuperYoumans behind this inspiring work are not only mega-watt talents, but powerhouse personalities as well. Their hearts are filled to the brim with improving the world and empowering people, young and old, within it. The idea that we all have super-heroines/heroes inside of us is a concept that is simultaneously simple and profound. Simple, because we can all dream up fantasy, versions of ourselves – righting the world with our larger-than-life imaginary avatars and ideas that we likely dismiss for fear of sticking out in the crowd. Yet, profound, because giving ourselves permission to actually put that confidence into practice requires wanting to stick out in the crowd, daring to risk failure in order to succeed. *SuperYou* encourages us to take those risks – to be 100% true to ourselves in order to find the super-strength within. The show also has much to say about grief and its relationship to our daily lives. We cannot change the past, but we can certainly re-frame our present to live our best lives in the future – honoring those we have lost and those we remember in the best way possible.

SuperYou's past includes a concert in the pouring rain on the backs of five pickup trucks at a drive-in movie theatre parking lot in upstate New York, a concert at Carnegie Hall, readings across America and in London, and more. *SuperYou's* present is imminent for you in this place and time. *SuperYou's* future includes at least London's West End and many more stops as it will spread author Lourds Lane's empowering message loud and clear across the globe.

The next chapter in *SuperYou's* journey starts right here in Milwaukee at Skylight. We could not be more thrilled to share it with you. Rise Up. Blast Through. Make the difference you imagine for yourself and the world.

A handwritten signature in black ink, appearing to read 'Michael Unger'. The signature is fluid and cursive, with a long horizontal line extending to the right.

A NOTE FROM DIRECTOR AND CHOREOGRAPHER, JOANN M HUNTER



New musicals are exciting and frightening all at once. We are beyond thrilled to be welcomed here at Skylight while we continue our journey in the creative process of *SuperYou*. This show is on its way to London's West End and while the production there may grow in scope and scale, our goal at Skylight has been to get to the heart of the story.

Obstacles, as most of us perceive them, are exterior when in fact I believe most of the time our biggest obstacle is ourselves. *SuperYou* delves into this while we follow the journey of Katie White. I think we can all take something away from *SuperYou* that we can either apply to ourselves or see a parallel.

The talent you will see on the stage is extraordinary and I am so lucky to be able to collaborate with this company while we continue to develop *SuperYou*.

Thank you,
JoAnn M Hunter

COME SPEND
THE SUMMER
WITH

Skylight
music theatre



Skylight
music theatre

Kids
Writes

At the Sharon Lynne Wilson Center • July 10-14

- For students entering 4th-7th grade
- A weeklong creative writing and performance camp
- Performance of work will be July 14.

For more information and to register online, visit
www.skylightmusictheatre.org/SUMMER

MAHLER'S RESURRECTION SYMPHONY

CLASSICS SEASON FINALE!



FRI
7:30PM

JUN
16

SAT
7:30PM

JUN
17

TICKETS AT
414.291.7605 | mso.org

BRADLEY SYMPHONY CENTER

ANNA LARSSON

MSO MILWAUKEE
SYMPHONY
ORCHESTRA

KEN-DAVID MASUR / MUSIC DIRECTOR

WILLIE FUN
EVENTS

THIS SUMMER,
WE PARTY.



Fun
**MADE
SIMPLE**



**FULL SERVICE PARTY AND
EVENT RENTALS**

www.WillieFunEvents.com

SUPERYOU CAST

(in order of appearance)

Ash/Blast.....	Jenna Rubaii*
Sammy/Samantha/Seven	B Noel Thomas*
Jo Jo/Rise.....	Wren Rivera*
Missy/Ima-Mazing	Shelby Griswold*
Young Katie/Lighting Girl	Serena Parrish*
Mi Roar	Blake Zelesnikar*
Matty.....	Chris Oram
Mom.....	Melissa Anderson
Katie	Kennedy Caughell*
Jay	Justin Matthew Sargent*
Super-Ensemble.....	Gabriel Manuel Burdette, Sarah Zapiain, King Hang, Alexis Cimoch

* Denotes member of Actors' Equity Association

DANCE CAPTAIN

Blake Zelesnikar

UNDERSTUDIES

Natasha Posey (Mom), Gabriel Burdette (Matty),
Alexis Cimoch (Young Katie & Ima-Mazing), King Hang (Jay & Mi Roar),
Sara Zapiain (Katie)

BAND

Music Director/Keyboard	Bryson Baumgartel
Guitar (Acoustic & Electric).....	Chris Newlin
Bass.....	Michael Ritter
Drums and Percussion.....	Michael (Ding) Lorenz

PRODUCTION SUPPORT

Associate Director	Lindsey Hope Pearlman
Assistant Choreographer	Greg Sim
Assistant Stage Manager	Jordan Ilyssa Angelo
Scenic Artist.....	Annabelle Liebering
Scenic Carpenters.....	Christopher Kurtz, Rollie Layman
Properties Supervisor	Simone Tegge
Stitchers	Carie Bronson, Jeanne Schrank, Lauren Stoner
Electricians.....	Rollie Layman, Captain Koenezny, Katy Lane
Audio Crew Swing.....	Lizzie Oppermann
Wardrobe Supervisor	Carly Coldren
Deck Crew/Video Operator.....	Drea DV
Light Board Operator	Zoe Lucas
Audio Engineer	Lane Palmer
Followspot Operators	Tony Roman, Jen Letscher
Comic Artists	Benjamin Goetz and Erik Teague
Assistant Video Designer	Brian C. Staton
Rehearsal Production Assistant.....	Josh Hart
Graphic Design Support	Robert “Bebo” Nelson
Photographer	Mark Frohna

Special Thanks to Studio Gear, Steve Tonar, Van Dean, and Aaron Hubbard

PRODUCTION STAFF

Technical Director	Leo Haselhorst
Assistant Technical Director.....	Taylor Adams
Scene Shop Supervisor/Fleet manager	Tony Roman
Carpenter	Drea DV
Costume Director	Shima Orans
Wardrobe Supervisor	Carly Coldren
Lighting Supervisor	Rafael Vasquez
Assistant Lighting Supervisor	Zoe Lucas
Studio Lighting/Audio Supervisor	Anna Janicek
Audio Supervisor	Lane Palmer
Properties Supervisor	Simone Tegge
Lead Props Artisan	Yvonne Tessman

MUSICAL NUMBERS

ACT I

Who's Stronger Now?/Underneath the Mask	Sammy, Ashley, Jo Jo, Missy, Young Katie, Mi Roar, The SuperYou Singers
Don't Wait, Create	Matty, Young Katie
You're My SuperHero	Young Katie, Sammy, Jo Jo, Missy, Ashley, The SuperYou Singers
Best Friend	Young Katie, Matty, Katie, Seven, Rise, Ima-Mazing, Blast
Fragmented	Katie
Held While Flying	Jay
We Are Awake	Seven, Rise, Ima-Mazing, Blast, Katie
Light in Me Ignite	Blast, Lightning Girl, Katie
What's This?	Katie
We Do it Together	Katie, Jay
Do I Matter?	Katie
Be Big	Ima-Mazing, Blast, Seven, Rise, Katie
And Now I Rise	Rise, Blast, Seven, Ima-Mazing, Katie, Lightning Girl
I'm Gonna Speak	Katie
The Truth is Coming for You	Samantha, Katie
The Time Is Now	Lightning Girl, Mi Roar, Seven, Ima-Mazing, Rise, Blast, Katie
To My Angels	Katie

ACT II

We're Here	Blast, Rise, Ima-Mazing, Seven, Katie
Something's Very Very Wrong	Blast, Rise, Ima-Mazing, Seven
Leave Me Alone	Katie
Sorry	Jay
I Need You	Katie, Jay
The Pressure's On/Time to Fight for Katie White	Jay, Katie, Blast, Rise, Ima-Mazing, Seven
All We Got is Now	Blast, Rise, Ima-Mazing, Seven, Matty, Katie
The Final Battle	Lightning Girl, Katie, Mi Roar
It's Always Been Me	Katie, Blast, Rise, Ima-Mazing, Seven, The SuperYou Singers
Light of the World	Samantha, Missy, Ash, Jo Jo, Katie, Mom
Stronger Now	Rise, Ima-Mazing, Blast, Seven, Katie, Lightning Girl

World
Premiere
Wisconsin

Don't forget to check-in!



Step 1: Scan the QR code or go to the link below & sign-up for the **FREE WPW Passport**. No downloads required!

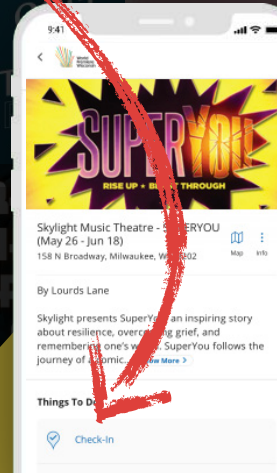
Step 2: Check in for this show using the code:

4166

See plays and **earn points** along the way!

Be entered into **sweepstakes** and **giveaway opportunities**, exclusive to passport holders!

Experience a **bold idea** brewed right here with pride in the great state of Wisconsin!



worldpremierewisconsin.com/passport

Trust Your Health to One of Milwaukee's Most Respected Medical Practices.

It's important to choose a physician who will listen closely to your needs and respond genuinely to your concerns. Fortunately for you and your family, our physicians have been providing exceptional care in Milwaukee and Ozaukee for over 100 years.

INTERNAL MEDICINE



Kathleen Baugrud, M.D.



John Betz, M.D.



Avi Bernstein, M.D.



Matthew Connolly, M.D.



Kevin DiNapoli, M.D.



Deidre Faust, M.D.



Scott Jorgensen, M.D.



Unchu Ko, M.D.



David Lucke, M.D.



Rachel Osterbaan, M.D.



John Sanidas, M.D.



Abraham Yarghese, M.D.



James Volberding, M.D.



Dima Adl, M.D.



Jay Balachandran, M.D.



Burak Gurses, M.D.

PULMONARY



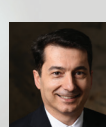
Abdullah Fayyad, M.D.



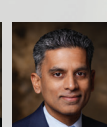
Vijay Khiani, M.D.



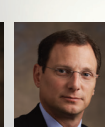
Gene Klugman, M.D.



Venelin Kounev, M.D.



Srihari Ramanujam, M.D.



Chad Stepke, M.D.



Anne Lent, M.D.



Kristin Schroederus, M.D.

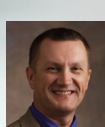
GASTROENTEROLOGY



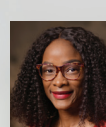
Amy DeGueme, M.D.



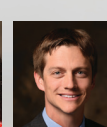
Elaine Drobny, M.D.



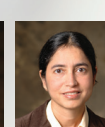
Antoni Gofron, M.D.



Usonwanne Ibekeke, M.D.



Brent Jones, M.D.



Kawaljeet Kaur, M.D.

ALLERGY & IMMUNOLOGY

MADISON MEDICAL AFFILIATES



MADISON MEDICAL
MILWAUKEE · MEQUON

MadisonMedical.com | 414.272.8950

SURGERY



Richard Caffey, M.D.



Jasna Coralic, M.D.



Alysandra Lal, M.D.



Joseph Regan, M.D.



Craig Siverhus, M.D.



Carmen Balding, M.D.



Camille Hessel, M.D.

MOHS SURGERY



Kevin Gee, M.D.



Christopher Kearns, M.D.



Jonathan Berkoff, M.D.



Kathy Frantskevich, M.D.



Shireen Jayne, D.O.



Jennifer Morales, M.D.



Nicolette Deveneau, M.D.

UROLOGY

OBSTETRICS & GYNECOLOGY

UROGYNECOLOGY



Amanda Cooper, M.D.



Tracy Donahue, M.D.



Valerie Lynn, M.D.



Jack Maloney, M.D.



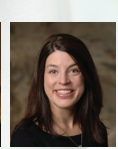
Jason Rosenberg, M.D.



Debra Scarlett, M.D.

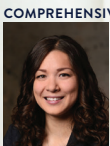


Thorstein Skulason, M.D.



Heather Wells, M.D.

DERMATOLOGY



Lisa Bennett, M.D.



Alwin Edakkunnathu, O.D.



James Ivanoski, O.D.



Joseph Zilisch, M.D.

COMPREHENSIVE EYE CARE

Visit MadisonMedical.com
to learn more about our doctors
and their specialties.

CAST / WHO'S WHO IN THE CAST



**Melissa
Anderson**



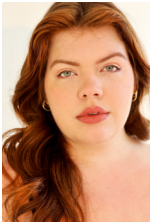
**Gabriel Manuel
Burdette**



**Kennedy
Caughell**



Alexis Cimoch



**Shelby
Griswold**



King Hang



**Christopher K.
Oram**



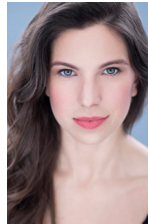
Serena Parrish



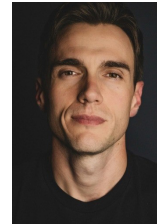
Natasha Posey



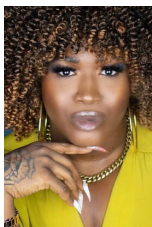
Wren Rivera



Jenna Rubaii



**Justin Matthew
Sargent**



B Noel Thomas



Blake Zelesnika



Sarah Zapiain

Melissa Anderson (Mom) A native of Milwaukee, Melissa Anderson has performed in Soloist and Principal Roles with companies as diverse as the Milwaukee Ballet, Ballet Teatro Municipal de San Juan, Southern Ballet Theatre, Michigan Opera Theatre, and the Icelandic National Ballet. After her ballet career, Melissa became a company member of the Danceworks Performance Company (2002-2019). Melissa teaches Ballet at the University of Wisconsin, DanceworksMKE.org, and Milwaukee area studios. Melissa has appeared in Sam Shepard's film *Far North* (1988), the MOT/Jason Powell production of *Doc Danger*, and the recent local film *Mags and Julie Go on a Road Trip* (2020).

Gabriel Manuel Burdette (Super-Ensemble, Matty-Understudy) is a proud Milwaukee artist! He has been seen this season in *Noises Off* (Electrician), *Evita* (Ensemble) and *A Jolly Holiday: Celebrating Disney's Broadway Hits!*, and recently in Forte Theatre Company's *Into the Woods* as Jack.

Kennedy Caughell (Katie) is excited to bring this story to life! As a superhero lover, this is a dream come true. She was last seen playing Nan in the new musical *Mozart: Her Story* at Carnegie Hall. She has been seen playing Carole King across the country in *Beautiful: The Carole King Musical* and on Broadway in *Paradise Square*, *Natasha, Pierre, & the Great Comet of 1812* and *Beautiful*. Other Nat'l/Int'l Tours: *Elphaba Standby* in *Wicked* & *Heather* in *American Idiot*. TV/Film: *Law & Order SVU*. Elon BFA. Love to Tim, Fam, the K's, DGRW, and the SuperYoumans for believing in me! Dare to be you. Twitter/Insta: @Kennedy-Caughell.

Alexis Cimoch ((Super-Ensemble, Young Katie & Ima-Mazing-Understudy) is an Early Career Professional with Skylight and is thrilled to be a part of this world premiere! She was last seen onstage in *Evita* and has been understudying various roles from this season. Alexis holds a BA in musical theatre from the University of Wisconsin-La Crosse. Favorite university credits include Amy March in *Little Women*, Hope Cladwell in *Urinetown*, Jenny Hill in *Big Fish* and Lana Sherwood in *War of the Worlds*.

Shelby Griswold (Missy/Ima-Mazing) is ecstatic to be making her Skylight Music Theatre debut in *SuperYou!* Most recently she was seen as Jane Seymour in *Six the Musical* with Norwegian Cruise Lines, Laura/Janis Joplin in *Beehive* (Lake Tahoe Shakespeare Festival), Baruska in *Once* (Beck Center), and Sally Bowles in *Cabaret* (Baldwin Wallace University). She'd like to thank her friends and family for their endless love and support! BWMT'20 @shelby__griswold

King Hang (Super-Ensemble, Jay & Mi Roar-Understudy) -he/him- is ecstatic to be a part of the Early Career Professionals program with Skylight. A recent graduate of the University of Wisconsin-Parkside, King is a proud Milwaukee resident. Recent credits include *A Jolly Holiday: Celebrating Disney's Broadway Hits*, *Evita*, and *Noises Off* at Skylight Music Theatre, *Much Ado About Nothing* (Claudio) with Summit Players Theatre, *The Mole Hill Stories* (Moon) and *Freaky Friday* (Louis) with Children's Theatre of Madison, and *Macbeth* (Banquo) with Sunstone Studios.

Christopher K. Oram (Matty) is a New York City actor, originally from St. George, Utah, where he was seen playing Jack Kelly in *Newsies*, Matthew in *Altar Boyz*, and Hero in *A Funny Thing Happened on the Way to the Forum*. Since the move to NYC he has debuted a lead role in an off-Broadway new musical and trained for a year in the Sanford Meisner acting technique. He is thrilled to be joining the team.

Serena Parrish (Young Katie/Lightning Girl) -she/they- Serena is a first year at the Institute of American Musical Theater (IAMT). Off Broadway credits include: The Girl in *Not Even The Good Things*, Mary in *Presenting The Queen of Hearts*. Regional credits include: Small Allison in *Fun Home*, Laura in *The Glass Menagerie*, and Mary Lennox in *The Secret Garden*. Readings: Jane in *Pete(her)Pan*, and Rebecca in *XY*. TV/Film: *New Amsterdam*, *Life and Beth*, *Cherry Pie*, and *FBI: Most Wanted*. Instagram: @serena_parrish. I would like to thank my wonderful agency, Stewart Talent and Management, Lil Angels Unlimited.

Natasha Posey (Mom-Understudy) is thrilled to return to the Skylight Music Theatre stage after her first show in 2004's *Cabaret*. Natasha began her dance career with Augusta Ballet Company. She earned a BFA in ballet from Point Park College in Pittsburgh, Pennsylvania. Local dance companies include Danceworks Performance Company and Catey Ott Dance Collective. Natasha has been on staff with Milwaukee Ballet School for over 20 years, and she is an MPS Montessori teacher.

Wren Rivera (Jo Jo/Rise) -they/them- is an Asian-Latinx non-binary performer originally from the burbs of Chicago. They've recently been seen on stage with the Jonas Brothers (Broadway), *Between The Lines* (Jules/Ondine), *Jagged Little Pill* (Broadway Jo u/s, ens.), and on the screen with Dylan Mulvaney's *Day 365*, and Apple TV+'s *WeCrashed*. Wren is thrilled to be making the transition from fan of *SuperYou*, to being part of *SuperYou!* @w.t.rivera

Jenna Rubaii (Ash/Blast) most recently toured the country as Mary Magdalene in the 50th Anniversary Tour of *Jesus Christ Superstar*, a role she started pre-pandemic and continued through the fall of 2022. Original Broadway Cast: *Groundhog Day*, Extraordinary Girl in *American Idiot* Int'l & Nat'l tour, Stephanie Mangano in *Saturday Night Fever* Asia tour. Currently based in NYC, Jenna is involved in multiple projects, including starring in a new, immersive musical, *Avalona*. Cast recording coming soon!
[@jrubaii](http://www.jennrubail.com)

Justin Matthew Sargent (Jay) Broadway: Peter Parker in *Spiderman: Turn Off The Dark*, Drew in *Rock of Ages*, Swing in *Bonnie and Clyde*. He has performed alongside music legends like John Legend, Alice Cooper, Sara Bareilles, Dee Snider, Kip Winger, Graham Russell, and has been a guest singer with the band *Air Supply*. Justin has toured the country singing everything from Queen to Andrew Lloyd Webber. His TV/FILM appearances include *Jesus Christ Superstar: Live on NBC*, *Law & Order: SVU*, *Mr. Robot*, *Delocated*, *Royal Pains*, and more!
Instagram: @Justinmsargent

B Noel Thomas (Sammy/Samantha/Seven) -She/Her- is excited for her midwest premiere after moving from the Bay Area, CA as a performing artist and teacher, now currently based in New York. Her versatile baritone-to-soprano voice has allowed her to be able to play roles that run the gamut of gender and vocal range. A selection of her credits includes ABC's *American Idol* Season 3. Theatre Forward 2021 Virtual Gala (Featuring Jason Robert Brown, Kate Baldwin, George Salazar, Anika Noni Rose & More), *The Toxic Avenger* (Bay Area Theatre Critics Circle Award winner, Theatre Bay Area Award nominee), *Sister Act* (Deloris; Theatre Bay Area Award nominee). @BNoelThomas

Blake Zelesnikar (Mi Roar) is thrilled to be making his Skylight Music Theatre Debut! Blake has recently been seen in the following: Shane Oman in *Mean Girls* national tour, Slave Master in *The Phantom of the Opera* national tour, Ensemble in *An American in Paris* national tour. Special thanks to my family and my fiancée Jess! And Congrats to the entire company of *SuperYou!*

Sarah Zapiain (Super-Ensemble, Katie-Understudy) is a Milwaukee based performer and a current member of Skylight's Early Career Professional Internship program. She was most recently seen on the Cabot Stage in *Noises Off* (Belinda U.S.) and *Evita* (ensemble/Eva U.S.). Her favorite credits include *Little Women the Musical* (Jo March) and *The Sound of Music* (Maria) with Forte Theatre. Other credits include Maria in *The Tamer* (Sunstone Studios), Don Jon in *Much Ado About*

Nothing (Fleeing Artists Theatre), and The Porter/Witch #2 in *Macbeth* (Voices Found Repertory).

CREATIVE TEAM

Lourds Lane (Book, Music, Lyrics) A Filipino-American, classically trained on piano and violin at age three, Lourds is the composer, writer and co-Arranger / Orchestrator of *SuperYou*. Her music was last showcased to sold out audiences at Carnegie Hall where Lourds shredded on the electric violin as superhero, Rise. The visionary and heart behind the *SuperYou* social good mission, Lourds Lane teaches global youth and adults to connect to their most empowered superhero selves through the educational arts and music-based 501c3 she founded, The SuperYou FUNdation. A Harvard honors grad, Lourds is a 2023 recipient of The NYC Women's Fund for Media, Music and Theatre, an Actor's Equity Association Paul Robeson Award Finalist for her dedication to the "betterment of humankind," winner of the Ideagen Global Leadership Award, a two time Fred Ebb musical theater award finalist), a Johnny Mercer Writer's Colony at Goodspeed alumni, a celebrated speaker at TEDWomen, TEDYouth, the United Nations, and Forbes Women, inspiring global audiences with empowering music-infused talks, the creator of a female indie rock musician community in NYC, The Medusa Festival, and was the lead singer/songwriter/multi-instrumentalist of her own critically-acclaimed nationally touring rock band. I am boundlessly grateful for this brilliant cast, creative team, our friends at Skylight, and all the SuperYouman producers and investors who share in our vision of inclusivity, kindness and love. I dedicate this show to my mommy in heaven -- my greatest superhero. @lourdslane

Joann M Hunter (Director and Choreographer) has 21 Broadway shows to her credit along with multiple on the West End, Australia, and Asia. How lucky are we to do what we love? Proud to be a Japanese American woman, and am more than just that.

Lindsey Hope Pearlman (Associate Director) is a director and playwright specializing in new plays and musicals. Co-book writer, *MacGyver the Musical*, *A Sign of the Times*. She received a 2022 NYSICA commission for her new play *ROAR!*. Her play *Lucy* received an EST/Sloan Commission, and her play *Viv is for Vengeance* received Honorable Mention from the American Playwriting Foundation Relentless Awards. Broadway: *Bandstand* (Assistant Director), *Leap of Faith* (SDC Observer). Drama League NY Directing Fellow 2019-2020. London International School of Performing Arts, Hamilton College. Adjunct Professor, Pace University.
www.lindseyhopepearlman.com

Greg Sim (Assistant Choreographer) is a performer and arts manager originally from Singapore. He currently lives in New York for fun and is so excited to be in Milwaukee working with JoAnn and this incredible team of artists. www.gregorysim.com

Wendy Bobbitt Cavett (Music Supervisor) Broadway and Off-Broadway: *Come From Away, Hamilton, Mamma Mia!, The Scarlet Pimpernel, A Year with Frog and Toad, The Most Happy Fella, A Tale of Two Cities*. National and International: *The Who's Tommy, Mamma Mia!, A Chorus Line*. Wendy is on the theater faculty of Wagner College.

Bryson Baumgartel (Music Director) is a New York-based music director, conductor, pianist, and guitarist. Favorite recent credits include: Associate Music Director of *Merrily We Roll Along* at New York Theatre Workshop; Music Director of *Mary Poppins* at Tuacahn Center for the Arts; Music assistant/rehearsal piano for *Hercules* at Paper Mill Playhouse. You can find Bryson this fall at the Hudson Theatre with the Broadway transfer of *Merrily We Roll Along* featuring Daniel Radcliffe.

Anna Louizos (Scenic Designer) is a three-time Tony Award nominee for *In the Heights, The Mystery of Edwin Drood*, and *High Fidelity*. Other Broadway designs: *School of Rock* (sets and costumes); *Holiday Inn*; *Dames at Sea*; *Honeymoon in Vegas*; *It Shoulda Been You*; Rodgers and Hammerstein's *Cinderella*; *Avenue Q*; *The Performers*; Irving Berlin's *White Christmas*; *Curtains*; *Baby It's You*; *All About Me* (set and costumes); *Steel Magnolias*; *Golda's Balcony*. Numerous Off-Broadway and Regional World Premier productions including: *Scotland, Pa* (Roundabout) *Kings* (Public Theater) *Tick, Tick... Boom, Altar Boyz*. Regional/Tours: *Fly* (La Jolla), *School of Rock* (London, USA, Australia, Asia, & Brazil), *Avenue Q*, Rodgers and Hammerstein's *Cinderella*, *In the Heights*, Irving Berlin's *White Christmas*, *West Side Story* (For Tokyo's 360 Stage Around). TV/Film Art Director: *Sex and the City, The Secret Lives of Dentists*.

Cynthia Nordstrom (Costume Designer) A blend of Fashion and Costume Design, Cynthia Nordstrom's range of design has been seen worldwide from Broadway to the Marvel Universe. Based in the NYC area, she is a designer with advanced color studies, materials and light experimentation in various tours, arena shows, and Universal Studios around the world. Cynthia is excited to be on the female driven creative team for *SuperYou*. Current projects: *Spells of the Sea Musical, Mattel Monster High Live* tour and a full time mother of Jack and Juliette.

Jamie Roderick (Lighting Designer) For SkyLight: *Disney's A Jolly Holiday: Celebrating Disney's*

Broadway Hits, Dennis DeYoung's Hunchback Of Notre Dame, Spelling Bee. Off-Broadway: *Stranger Sings, ¡Americano!, Disney's Winnie The Pooh, Emojiland, Midnight at the Never Get, Mrs. Warren's Profession, Caesar & Cleopatra, Safeword, Accidentally Brave, We Are The Tigers, Red Roses, Green Gold, The Woodsman, Afterglow, A Dog Story*. London: *It Happened in Key West*. Regional: Many Disney Musicals, *The Bikinis!, Romeo & Juliet, Twelfth Night, Midsummer, Macbeth, Hamlet*. www.JamieRoderick.com

Chad Parsley (Sound Designer) is a Chicago based Sound Designer who is delighted to return to SkyLight after designing sound for *Evita* and *Hunchback of Notre Dame*. Chad has spent the last 25 years working in the sound departments of *Hamilton: An American Musical, The Book of Mormon, SIX, Beautiful the Carole King Story, Jersey Boys, Tootsie, Rock of Ages, Spamalot*, and *Avenue Q*. Design credits include: *The Book of Mormon* (Networks Entertainment), *Jersey Boys* (Norwegian Cruise Lines), *Emma* (Chicago Shakespeare Theater), *Joseph and ...* (Dallas Theater Center), *The Wiz* (Dallas Theater Center)

Patrick W. Lord (Video Designer) is happy to be back with SkyLight Music Theatre, where he previously designed *Ernest Shackleton Loves Me*. Other select design credits include: National Tours: *On Your Feet; Hairspray*. NEW YORK: Lincoln Center: *Where Words Once Were*; White Plains Performing Arts Center: *The Bodyguard: The Musical*; R. *Evolución Latina: The Tempest*. REGIONAL: The John F. Kennedy Center for Performing Arts: *Earthrise, Voyagers, Digging Up Dessa, Where Words Once Were*; Shakespeare Theatre Company: *Hamlet, Twelfth Night*; Olney Theatre Center: *The World Goes 'Round, Hedwig and the Angry Inch, A Christmas Carol*; Everyman Theatre: *Dinner and Cake*; Flatrock Playhouse: *West Side Story, South Pacific*; People's Light: *Thurgood*; Peppercorn Theatre: *Desvelado*; Crosswell Opera House: *Beauty and the Beast, Chitty Chitty Bang Bang*; Gala Hispanic Theatre: *On Your Feet* (Helen Hayes Award Nomination), *Fame: The Musical*; Synthetic Theatre: *The Phantom of the Opera*; Arts Centric: *Dreamgirls, The Wiz*; Forum Theatre: *Love and Information, Building the Wall, Blackberry Winter*; Theatre Alliance: *Mnemonic* (Helen Hayes Award Nomination); Keegan Theatre: *Bridges of Madison County, Big Fish, American Idiot*; Arts on the Horizon: *Outside the Lines*; 1st Stage: *The Phlebotomist, Columbinus*. MFA, The University of Texas at Austin. www.patrickwlord.com

Brian C. Staton is a New York based Projection/Video Designer. He is excited to work with SkyLight Music Theater for the first time! His noted work includes Projection Design are: *Windfall, Becoming Dr. Ruth, 20,000, Invincible, My Witch, The R&J Project, The Great Gatsby*. @briancstaton, briancstaton.com

Kelly Ruth Cole (Production Stage Manager)

is thrilled to return to Skylight Music Theatre after her debut with *Raisin*. Her favorite credits include *The Christmas Spectacular Starring the Radio City Rockettes* & *The New York Spectacular* at Radio City Music Hall, *A Marvelous Order* (a Developmental Opera), *How Deep is the Ocean?* (as part of NYMF), *The Inexplicable Redemption of Agent G & Geek* with Vampire Cowboys, *The Sluts of Sutton Drive* at Ensemble Studio Theatre, the National Tour of *My Heart in a Suitcase*, and *Tommy* at Baystreet Theatre. "Nothing is really work unless you would rather be doing something else."

Melissa M. Jones (Producer) is a Tony-nominated producer and investor in productions including *Jagged Little Pill*, *Come From Away*, and *Allegiance*. She is also president of All Awesome LLC production company, director in the global empowerment non-profit, The SuperYou FUNDation, and a Ball State University Dept. of Theatre and Dance Alumni board member.

"Broadway Sam" Arce (Co-Producer): Co-Producer/Investor - West End: *Bonnie & Clyde*, *Prince of Egypt*, *Be More Chill*, Broadway: *A Beautiful Noise*, *Be More Chill*, *American Son*; Off-Broadway/Las Vegas: *Newsical*; Off-Broadway: *Rock of Ages*, *Broadway Bounty Hunter*; Las Vegas: *A Musical About Star Wars*; Upcoming: *Mandela*, *Hamlet Pop Musical*, *Fly More Than You Fall*; Film: (Co-Producer) Pigasus Pictures.

Mary Maggio (Co-Producer): Tony Award-Winning Producer; Film Producer; Broadway: *Company* (Tony, Drama Desk, Drama League Awards), *Funny Girl* (Lea Michele) - Co-Producer, *The Sign In Sidney Brustein's Window* - Co-Producer - Tony-nominated 2023 (Oscar Isaac, Rachel Brosnahan), *The Great Comet of 1812* - Co-Producer - Tony-nominated (Josh Groban), *On The Town* - Co-Producer - Tony-nominated. Upcoming: *Mandela*, *Prince of Egypt*, *Merrily We Roll Along*, *Hamlet Pop Musical*, *Tribes* (Lead Producer); "Black Bouquet" (film); Tours: *Company*, *Funny Girl*; Investments: *Matilda*, *Pippin*.

Jeffrey Neuman (Co-Producer): Co-Producer/Investor - West End: *Be More Chill*, *On Your Feet!*; Broadway: *Company* revival (2022), *Be More Chill*, *POTUS*; Off-Broadway/Las Vegas: *Newsical*; Las Vegas: *A Musical About Star Wars*; Off-Broadway: *Broadway Bounty Hunter*; US National Tour: *Company* Revival (2023); Regional: *Love in Hate Nation*.

Jan Warner (Co-Producer): Writer of *Grief Day by Day: Simple Practices and Daily Guidance for Living with Loss -and- Grief*. (over 70K copies sold) and creator/manager of the online

community *Grief Speaks Out* supporting over 2.4 million global followers. Off-Broadway: Producer: *Party Face*, starring Hayley Mills; Associate Producer: revival of Tennessee Williams' *The Two Character Play*. Film: Executive producer and creative consultant of documentary films, including "Poetry of Resilience" and "The Last Laugh".

Create2Connect Productions (Co-Producer):

Tammy & Joel Nelson are thrilled *SuperYou* is their debut co-producing opportunity. Having met Lourds through a donation Tammy's company, CONQUERING, made to Lourds' nonprofit, SuperYou FUNDation, they quickly discovered how perfectly aligned they were around the mission of empowering others. Create2Connect is honored to support the work of this dynamic, all-female creative team & incredible cast to bring the show's inclusive, inspiring message to as many people as possible.

Dan Frishwasser (Co-Producer):

Broadway credit: (Producer) *The Iceman Cometh*, *Honey-moon in Vegas*, Rogers + Hammerstein's *Cinderella*, *Clybourne Park* (Tony Award), *Stick Fly*, *How to Succeed in Business Without Really Trying*, *Long Story Short*, *La Bite*, *The Miracle Worker*, *A Little Night Music*, *Memphis* (Tony), *The Norman Conquests* (Tony). Movie credit: (Producer) "On Coal River," "Girl Most Likely," *The Inevitable Defeat of Mister & Pete*.

Michael Unger (Director, Artistic Director)

For Skylight, Michael has directed *Noises Off*, *A Jolly Holiday: Celebrating Disney's Broadway Hits*, Dennis DeYoung's *The Hunchback of Notre Dame* (nine Broadway/World Awards), *Little Shop of Horrors* and *Me, Myself and I* for Skylight's Education program. Amongst many virtual offerings, he directed the Broadway World Award-winning *Being Earnest*, now available worldwide online. He was previously Associate Artistic Director of Off-Broadway's York Theatre, credits included *You're a Good Man Charlie Brown* and *Big*. For nine years, he was the Producing Artistic Director of NewArts, started with a local father in response to the Sandy Hook Elementary School tragedy; directing 17 productions working with over 650 area-children. Other selected directing credits include *A Christmas Carol* (McCarter Theatre for 18 years), *Two Point Oh* (NY Times Critics' Pick), *Time Stands Still* (Cape Cod Chronicle Best 2015), *My Sister in This House* (Deaf West, Ovation Recommended), and new versions of *The Happy Time* and *The Rink*. World premieres include *The 25th Annual Putnam County Spelling Bee*, *Caligula*, and *A ROCKIN' Midsummer Night's Dream* (featured in the award-winning documentary film *Midsummer in Newtown*). He has directed 14 operas plus benefit concerts honor-

ing Susan Stroman, André DeShields, Maltby and Shire, and Leslie Uggams, as well as for the communities of Sandy Hook, CT and Parkland, FL.

Susan Varela (Executive Director) Originally from Milwaukee and a graduate of UW-Stevens Point, her professional career as a performer has taken her from the Broadway stage (*Les Misérables*) to the Skylight stage (*Les Misérables*, *Into the Woods*, *Wizard of Oz*, *Sweeney Todd*). She has performed at the Denver Center Theatre (Tony Award-winning season) and the Yale Repertory Theatre, among others. She has produced, directed, performed and written for the stage and television alongside her husband, actor Andrew Varela. Susan was previously the Director of Artistic Operations for Skylight.

Actors' Equity Association ("Equity"), founded in 1913, is the U.S. labor union that represents more than 50,000 actors and stage managers. Equity seeks to foster the art of live theatre as an essential component of society and advances

the careers of its members by negotiating wages, working conditions and providing a wide range of benefits, including health and pension plans. Actors' Equity is a member of the AFL-CIO and is affiliated with FIA, an international organization of performing arts unions. #EquityWorks

Wojcik Casting B'way: *The Little Prince*. Tours: *JC Superstar*, *Motown*, *Dreamgirls*, *Jekyll & Hyde*, *West Side Story*, *Something Rotten!*, *RENT*, *Kinky Boots*, *Rock of Ages*, *An Officer & A Gentleman*, *Flashdance*, *Joseph/Dreamcoat*, *A Chorus Line*. Norwegian Cruise's: *Kinky Boots*, *Noise Boys* and *the Donna Summer Musical*. Extensive Branded Family Entertainment including *Mr Blippi*, *Blues Clues* and more. Off-B'way: *Othello: The Remix*, *Church & State*, *The Two Character Play*, *Handle w/Care* and more. Regional: Multiple seasons/shows for theatres around the country. www.wojckicasting.com



CLASSIC

Althea's
Fine Lingerie

777 North Jefferson Street
AltheasFineLingerie.com



SCAN ME



A Crescendo Is Building

For 138 years, Eastcastle Place has been a beautiful, welcoming senior living community in Milwaukee's East Side.

***With our new expansion opening soon, the excitement –
and our community – is growing!***

Now is the time to leave behind the worries of homeownership and concerns about future healthcare needs and live immersed in the beauty, confidence, and vibrancy of Eastcastle Place.

**EXPERIENCE HARMONY
IN SENIOR LIVING.**

**Call (414) 519-9477 or visit
Eastcastleplace.com.**

2505 East Bradford Avenue
Milwaukee, WI 53211
Eastcastleplace.com

Managed by  Life Care Services*       

SKYLIGHT MUSIC CIRCLE OF DONORS

Skylight Gratefully acknowledges the following individuals, foundations, organization, businesses and government agencies who provided support within the last year and helped us to deliver the high quality music theatre productions to the greater Milwaukee community. Our thanks to the many donors below \$250 whose gifts are vital to Skylight's continuing success; we regret there is not space to list them all. Please refer to our website for a complete listing. This list contains donors from the current Fiscal Year January 2023.

Skylight Music Theatre acknowledges and thanks the **United Performing Arts Fund**, our single largest donor, for its generous annual support.

Richardson Circle - \$400,000+

United Performing Arts Fun

Benefactor Circle \$25,000 - \$399,999

Anonymous

Lee Calvey

Herzfeld Foundation

Jan Serr and John Shannon

The Estate Of Donald Whitaker

The High Road Publishers LLC

The Lynde and Harry Bradley Foundation

Joan Yuen

Star Circle \$10,000-\$24,999

John and Laura Emory

Virgilee Krueck

Quarles & Brady LLC

Walt and Irene Skipper

Shubert Foundation

Wisconsin Arts Board

Wispect Foundation

Herbert Zien and Elizabeth Levins

Sponsor Circle \$5,000- \$9,999

T. Arthur and Rhonda Downey

Mark and Barbara Bolens

Bonnie And Barry Behnken Family

Charitable Fund

Kenneth Dortzbach and Jennifer Kent

Ralph Gorenstein

Ms. Valerie Johnson

Howard and Sara Miller

Susan Nichols

Marcia JS Richards

Richard and Kay Yuspeh

We Energies Foundation

Producer Circle \$2,500-\$4,999

Baird Anonymous

Robert Balderson

Barbara Brumder Buzard Fund

Roger Dickson & Linda Cesario

Judy and Gary Jorgensen

Terrance and Kristie Kurtenbach

Michael and Tonya Lueder

Luedke-Smith Fund

KeleMarie Lyons

Margaret Heminway Wells Fund

Tim Mikeworth

Northwestern Mutual

Blaine and Linda Rieke

Shirley Butzin Charitable Fund

Sikich LLP

Skylight Anonymous

Gloria Tracy

Michael Unger

Director Circle \$1,000-2,499

Richard and Frances Bartels

Polly and Robert Beal

Chris Behling

William and Katherine Biersach

Briggs & Stratton Corporation Foundation, Inc.

Brian and Elizabeth Casey

Bruce and Margaret Charous

Clare M. Peters Charitable Trust

Cream City Foundation

CyberGrants, LLC

James and Karen D'Ambrisi

Dr. Carl W. Eberbach & Elisabeth

Falk Eberbach Fund

Steven and Buffy Duback

Giacomo Fallucca

Mary Lou Findley

Timothy and Susan Frautschi

Sandy and Bill Haack

Moira Fitzgerald and Peter Kammer

Foley & Lardner LLP

Gottlob Armbrust Family Fund

Joseph and Gwenn Graboyes

Barbara Haig and Daniel Schley

Amy Jensen

Eileen Kamerick

Susan and Donald Kerber

Pam Kriger

Sally Long and Franklin Loo

Dawne and Ray Manista

Mary Jo and Guy McDonald

Mary McNulty

Laura Mikeworth

Milwaukee Arts Board

Denis Murray

Laurie Ocepek

Lawrence and Bonnie Paplham

Quality Air Heating & Cooling LLC

Ryan Rosmann

Patricia and Charles Roy

Carol and Kevin Schuele

SKYLIGHT MUSIC CIRCLE OF DONORS

Vincent and Joanne Shiely
State Farm Companies Foundation
The Brownstone LLC
David and Cheryl Walker
Sue Wells
William Stark Jones Foundation
Lee Wolcott
Joseph and Mary Ann Zompa

Designer Circle \$500-999

George Banda
Carolee Beutler
Lawrence Bialcik
William and Barbara Boles
Janet and Daniel Brophy
Burns-Schrader Family Fund
Allen Cain
Jane and William Crise
Dominique Delugeau
Jill and Ed DeFrance
Karin and Peter Drescher
Mary and John Emory
Donald Fraker and Maja Jurisic
Rocio and John Froehlich
Mark and Virginia Gennis
Grammy B's Cookies
Joseph and Leila Hanson
Karl Wuesthoff and Leslie Hauser
Cheryl and Roy Hauswirth
David and Margarete Harvey
Nancy Jacobs
Richard and Diane Kane
Kane Communications Group
Larry Kreiter
Sandra Laedtke
Dale and Sandra Landgren
Justine Leonard
Pat Lombardo
Loyal Grinker
Michele Marsh
Francis and Rose Mary Matusinec
Dave & Lori Miller
Christine Mortensen
Michelle and Michael Nast
Jean Novy
Jane O'Connell
Monica Orr
Bruce and Mary Ellen Pindyck
LindaGale Sampson
Thomas and Kathy Schrader
Shirley E Butzin Charitable Fund
Karen and Mark Sostarich
Paul Stabell and James Moore
Audrey Strnad
Patricia Struna
Kathleen and Donald Wilson
Dick and Diane Wright

Choreographer Circle \$250-999

Elma Anderson

Richard & Patsy Aster
Sara and Richard Aster, M.D.
Blackbaud, Inc.
Barb and Mark Bolens
Rick Brewer
Rachael Brodd
Ruth J. Broekhuizen
SaraLynn Evenson and Derek Peruo
Marcia Brooks and Edward Hammond
Susan Bugalski
Sally and Ian Bund
Moira Conzelman
Mario and Catherine Costantini
Natalie Frankel
Pamela Frautschi
Foster Family Foundation
Stanley and Janet Fox
Elizabeth Garibaldi
John Gielow and Dianna Dentino
Margaret Hader
David Harrison
Jeffrey Harwell
Edward Hediger
Vicky Hediger
Harold and Jean Horneffer
Jack & Lucia Flynn Murtaugh Fund
Ronald Jacquart and Gary Van Wert
Daniel Janssen
Dr. Jeffrey and Dr. Jacqueline Jahnke
Ronald and Patricia Jodat
Darnelle Kaishian
William and Judy Kay
Lindsey Kopps
Konrad Kuchenbach
Robert and Patricia Kraft
Stanley Kritzik
Alice Kuramoto
Henry Krokosky and Charlotte Schall-Krokosky
Jack and Beverly Lemmon
John Lemmon
Colleen Lese and Thomas Karakis
Lois Malawsky
Lee Marquardt
Melissa and Chris Marschka
Debbie & Mark Mitchelson
William and Maureen Michaels
Michael Moorhead
Fred Muscavitch
Tracey Olson
Molly Perillo
Barbara Peters
John Peters
Michelle Platt
Fredrick Pike and Cecilia Taylor
Michael and Jayne Pink
Michelle Snyderman-Snyderman
John and JoEllen Stollenwerk
George and Eileen Stone
David Svejda
TruCannaBliss

SKYLIGHT MUSIC CIRCLE OF DONORS

Twisted Plants
Francesca Mayca Wegner
Carl and Janice Welle
Marilyn White
Heather Whitmill
Susan & Andrew Varela
Katrene Zelenovskiy

Tribute Gifts

In Memory of Judith Milbrath
 Coleman & Delia Brown
 Thomas Walsh
 Anthony & Stacy Menting
In Memory of William "Bill" Johnson
 Dan Schley
 Imogen Schley
In Memory of Janis Heins
 Scott Heins

In-Kind Donors

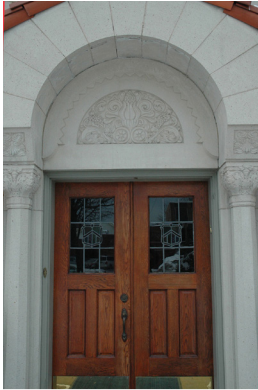
American Players Theatre Anonymous
Jennifer Bergman
Kathie Bernstein
Black Shoe Hospitality Danceworks Inc.
Roger Dickson & Linda Cesario Discovery World
Door Shakespeare
Jennifer Kent & Kenneth Dortzbach
Grammy B's Cookies
ane Hausman & William Finley
Float Milwaukee
Fred Astaire Dance Studios
Friends of the Domes
Mark Frohna
German Fest Milwaukee Inc.
Valerie Johnson
Michael Koss
Koss Corporation
Sandy Kreiter
Mike Laska
Lowlands Group
Marcus Performing Arts Center
Lee Marquart
Milwaukee Admirals
Milwaukee Art Museum
Milwaukee Ballet
Milwaukee Chamber Theatre
Milwaukee County Parks System
Milwaukee Irish Fest
Milwaukee Public Museum
Milwaukee Rep
Milwaukee Symphony Orchestra
Polly Morris
Next Act Theatre
Northern Sky Theater
Peninsula Players
Riveredge Nature Center
Saint Kate Arts Hotel
Savaglia Financial Advisors
Schlitz Audubon Nature Center
Walt & Irene Skipper

Snapdragon Flowers
Third Avenue Playworks
TMN Brand
Michael Unger
Urban Ecology Center
Matching Gift Corporations
Rexnord Foundation Inc.
State Farm Companies Foundation
We Energies Foundation

We make every effort to ensure that our donors are recognized properly. If we have made an error, please accept our sincere apologies and contact Debbie Prather Mitchelson at (414) 299-4953 with the correction.

*Community Partners
Historic Third Ward Association
TMN Brand Design
Visit Milwaukee*

Celebrating Life One Family at a Time



For over 45 years, families have trusted Jody to take care of the many details involved in pre-need planning, cremation or a traditional funeral service. Jody has the compassion, answers and experience to guide you every step of the way.



Jody Michael Armata, Resident Owner

3601 North Oakland Avenue • Milwaukee • 414-961-1812
NorthshoreFuneral.com



UNITED PERFORMING ARTS FUND

SUPPORT THE ARTS YOU LOVE

During the UPAF Community Campaign HAPPENING NOW!

Make a Gift* of *Just \$12/Month* and Receive:

YOUR UPAF SMART CARD Filled With Exclusive Offers!

1 Buy One Get One Free Ticket Offer at Each of UPAF's 14 Members

Discounts at More Than 25 Local Restaurants



DONATE Today!
UPAF.ORG/DONATE



*SMART CARD available with \$12/mo. sustaining credit card gift or \$150 gift. Milwaukee Rep, photo by Michael Brosilow, Danceworks.

SKYLIGHT MUSIC THEATRE STAFF

MICHAEL UNGER
ARTISTIC DIRECTOR

SUSAN VARELA
INTERIM EXECUTIVE DIRECTOR

ARTISTIC

Michael Lorenz.....Orchestra Contractor

Stephanie Staszak.....Interim Director of Artistic
Operations

BOX OFFICE

Kelley Arlt.....Box Office Manager

Maureen Kailhofer.....Box Office Supervisor

Jordan Ilyssa Angelo, Danny Brylow,

Anna Mikula, Audwin Short,

Kylie Kenny Sian Whitney,

Rylee Zuniga.....Box Office Staff

DEVELOPMENT

Debbie Prater Mitchelson.....Senior Director
of Development

EDUCATION

Fred Diggins.....Education Associate

FACILITIES

Robert Boose.....Building Operations Technician

Gustavo Gomez.....Building Operations Technician

FINANCE

Cathy O'Loughlin.....Director of Finance

HOUSE MANAGEMENT

Sandi Lash, Nate Press, Alydia Stangle, Zoe Waeltz,

Dawn Wenzell.....Assistant House Managers

MARKETING

Kendall Judy.....Director of Marketing

Morgan Pankratz.....Director of Communications and
Digital Marketing

Christopher Johnston.....IT/Database Manager

PRODUCTION

Kate Ferdinandi.....Interim Director of Production
and Facilities

Leo Haselhorst.....Technical Director

Taylor Adams.....Assistant Technical Director

Scenic

Tony Roman.....Scene Shop Supervisor/Fleet Manager

Drea DV.....Carpenter

Costumes

Shima Orans.....Costume Director

Carly Coldren.....Wardrobe Supervisor

Lighting

Rafael Vasquez.....Lighting Supervisor

Zoe Lucas.....Assistant Lighting Supervisor

Sound

Kelsea Sexton.....Audio Supervisor

Lane Palmer.....Assistant Audio Supervisor

Anna Janicek.....Studio Theatre Lighting/Audio
Supervisor

Props

Simone Tegge.....Properties Supervisor

Yvonne Tessman.....Lead Props Artisan

SKYLIGHT MUSIC THEATRE BOARD OF DIRECTORS

Valerie Johnson, President

Ken Dortzbach, President Elect
Mike C. Lueder, Secretary
Barbara Bolens, Treasurer
Chris Behling, VP of Strategic Planning

Roger Dickson, VP of Development
Laura Emory, VP of Marketing
Alec Fraser, VP of Governance
John Stollenwerk, VP of Facilities

F. Tessa Escamilla Bartels
Colin Cabot (honorary)
Gerald Falci
Moira Fitzgerald
Robert Heath

Marni King
Lindsey Kopps
Mary McNulty
Sara Meaney
Laura Mikeworth

Howard Miller
John Shannon
Irene Pilugin Skipper
Herb Zien

PAST PRESIDENTS (chronological order)

Clair Richardson
Dale Sorden
Allen Slichter
George Krueck
Timothy Frautschi
Mary Emory
Mary Pollock
Jack Gardner

Dick Wright
Byron Foster
Nick Owen
Sue Frautschi
Jeff Nohl
Asher Nichols
Matt Flynn
Larry Salustro
Howard Miller

Suzanne Hefty
Terry Kurtenbach
John Stollenwerk
David Harvey
John Flanagan
Alec Fraser
Michael C. Lueder
Marta Bianchini
Brian D. Till

SKYLIGHT ADVOCATES

Betty & Tom Arndt
Carol & Richard Bayerlein
Polly & Robert Beal
Katherine & William Biersach
Wendy & Richard Bliss
Morton Blutstein
E. J. Brumder, Jr.
Barbara Buzard
Patricia & Phillip Crump
Thallis Drake
Elizabeth Elser
Mary & John Emory
Mary & Matthew Flynn
Gabrielle & John Franke
Susan & Timothy Frautschi
Elizabeth & Frederic Friedman
Gwenn & Joseph Graboyes
Catherine Graham
Suzanne & Roy Gromme
Lindsay Holbrook Hammerer
& Peter Hammerer
Arlene Hansen
Katie Harding
& James Pionkoski
Cheryl & Roy Hauswirth
G. Edward Heinecke
Konrad Kuchenbach
Mary & David Huntington
Sharon & Ted Hutton

Charlotte & William Johnson
Judy & Gary Jorgensen
Jeanne & Richard Kessler
Susan & Robert Kinde
Tracey & Richard Klein
Mary & Kipp Koester
Marie Kohler & Brian Mani
Patricia & Robert Kraft
Roz Krause
Pam Kriger
Kristie & Terrance Kurtenbach
Nancy & Arthur Laskin
Emilia & Christopher Layden
Phoebe Lewis
Sally Lewis
Sally Manegold
Rose Mary & Frank Matusinec
Grace McBain Haydon
& John Haydon
Sandra & Michael McNeely
Donna & Anthony Meyer
Susan Nichols
Mary & Jeff Nohl
Jody & Joe Nolan
Barbara Notestein
Jane S. O'Connell
Bruce & Candy Pindyck
Nancy Pinter & R. Max Samson
Gwen Plunkett

Roberta & Larry Polacheck
Ildy & Skip Poliner
Hattie & Edward Purtell
Gordana & Milan Racic
Kristine & James Rappe
Linda & Blaine Rieke
Lee Dougherty Ross
& Jerold Ross
Patricia & Charles Roy
Marlene & Richard Schillfarth
Kathleen & Thomas Schrader
Carol & Kevin Schuele
Marsha Ruth Sehler
Maureen & Larry Sherkow
Joanne & Vincent Shiely, Jr.
Paige Sinden
Anne & Frederick Stratton, Jr.
Lisa & Paul Sweeney
John W. Taylor
Gloria Tracy
Pauline & Calvin Verbrugge
Anne & Tom Wamser
Gwen & William Werner
Nora & Jude Werra
Kathleen & David Williams
Helen Wilson
Diane & Richard Wright
Herbert Zien
& Elizabeth Levins

DAVID YURMAN



TREIBER & STRAUB
JEWELERS

14740 W. Capitol Drive, Brookfield, WI 53005
www.treiberandstraub.com
262.790.5757